

## Product datasheet for **TA314347**

### Phospholipase C beta 3 (PLCB3) Rabbit Polyclonal Antibody

#### Product data:

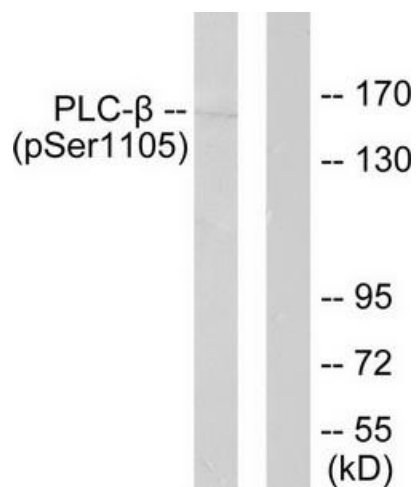
Product Type:	Primary Antibodies
Applications:	IHC, WB
Recommended Dilution:	WB: 1: 500~1:1000, IHC: 1:50~1:100, ELISA: 1:10000
Reactivity:	Human, Mouse, Rat
Modifications:	Phospho-specific
Host:	Rabbit
Isotype:	IgG
Clonality:	Polyclonal
Immunogen:	The antiserum was produced against synthesized phosphopeptide derived from human PLC- $\beta$ around the phosphorylation site of serine 1105 (N-N-SP-I-S).
Formulation:	Phosphate buffered saline (without Mg <sup>2+</sup> and Ca <sup>2+</sup> ), pH 7.4, 150mM NaCl, 0.02% sodium azide and 50% glycerol.
Concentration:	lot specific
Purification:	The antibody was affinity-purified from rabbit antiserum by affinity-chromatography using epitope-specific immunogen.
Conjugation:	Unconjugated
Storage:	Store at -20°C as received.
Stability:	Stable for 12 months from date of receipt.
Gene Name:	phospholipase C beta 3
Database Link:	<a href="#">NP_000923</a> <a href="#">Entrez Gene 18797 Mouse</a> <a href="#">Entrez Gene 29322 Rat</a> <a href="#">Entrez Gene 5331 Human</a> <a href="#">Q01970</a>
Synonyms:	FLJ37084
Note:	PLC-. (phospho-Ser1105) antibody detects endogenous levels of PLC-. only when phosphorylated at serine 1105.
Protein Families:	Druggable Genome



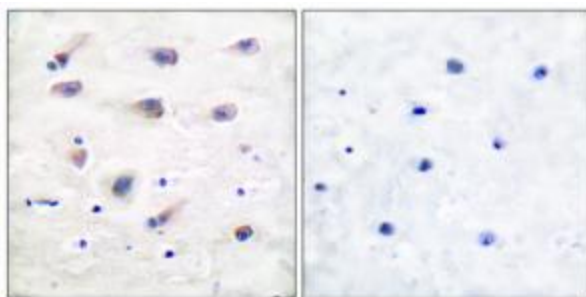
[View online »](#)

**Protein Pathways:**

Alzheimer's disease, Calcium signaling pathway, Chemokine signaling pathway, Gap junction, GnRH signaling pathway, Huntington's disease, Inositol phosphate metabolism, Long-term depression, Long-term potentiation, Melanogenesis, Metabolic pathways, Phosphatidylinositol signaling system, Vascular smooth muscle contraction, Wnt signaling pathway

**Product images:**


Western blot analysis of extracts from A431 cells, using PLC-β (phospho-Ser1105) antibody. The lane on the right is treated with the synthesized peptide.



Immunohistochemical analysis of paraffin-embedded human brain tissue using PLC-β (phospho-Ser1105) antibody. The picture on the right is treated with the synthesized peptide.