

## Product datasheet for **TA314345**

### Phospholipase C beta 2 (PLCB2) Rabbit Polyclonal Antibody

#### Product data:

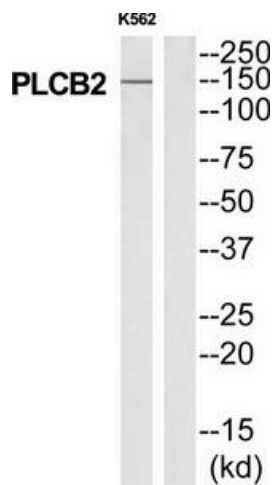
Product Type:	Primary Antibodies
Applications:	WB
Recommended Dilution:	WB: 1:500~1:3000, ELISA: 1:5000
Reactivity:	Human, Mouse, Rat
Host:	Rabbit
Isotype:	IgG
Clonality:	Polyclonal
Immunogen:	The antiserum was produced against synthesized peptide derived from C-terminal of human PLCB2.
Formulation:	Phosphate buffered saline (without Mg <sup>2+</sup> and Ca <sup>2+</sup> ), pH 7.4, 150mM NaCl, 0.02% sodium azide and 50% glycerol.
Concentration:	lot specific
Purification:	The antibody was affinity-purified from rabbit antiserum by affinity-chromatography using epitope-specific immunogen.
Conjugation:	Unconjugated
Storage:	Store at -20°C as received.
Stability:	Stable for 12 months from date of receipt.
Gene Name:	phospholipase C beta 2
Database Link:	<a href="#">NP_004564</a> <a href="#">Entrez Gene 18796 Mouse</a> <a href="#">Entrez Gene 85240 Rat</a> <a href="#">Entrez Gene 5330 Human</a> <a href="#">Q00722</a>
Synonyms:	PLC-beta-2
Note:	PLCB2 antibody detects endogenous levels of total PLCB2 protein.
Protein Families:	Druggable Genome



[View online »](#)

**Protein Pathways:**

Alzheimer's disease, Calcium signaling pathway, Chemokine signaling pathway, Gap junction, GnRH signaling pathway, Huntington's disease, Inositol phosphate metabolism, Long-term depression, Long-term potentiation, Melanogenesis, Metabolic pathways, Phosphatidylinositol signaling system, Taste transduction, Vascular smooth muscle contraction, Wnt signaling pathway

**Product images:**

Western blot analysis of extracts from K562 cells, using PLCB2 antibody. The lane on the right is treated with the synthesized peptide.