

Product datasheet for **TA314341**

PIK3C2G Rabbit Polyclonal Antibody

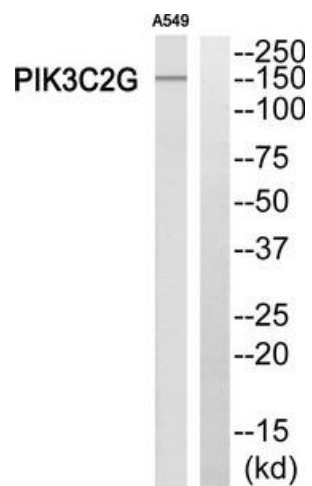
Product data:

Product Type:	Primary Antibodies
Applications:	WB
Recommended Dilution:	WB: 1:500~1:3000, ELISA: 1:10000
Reactivity:	Human
Host:	Rabbit
Isotype:	IgG
Clonality:	Polyclonal
Immunogen:	The antiserum was produced against synthesized peptide derived from Internal of human P3C2G.
Formulation:	Phosphate buffered saline (without Mg ²⁺ and Ca ²⁺), pH 7.4, 150mM NaCl, 0.02% sodium azide and 50% glycerol.
Concentration:	lot specific
Purification:	The antibody was affinity-purified from rabbit antiserum by affinity-chromatography using epitope-specific immunogen.
Conjugation:	Unconjugated
Storage:	Store at -20°C as received.
Stability:	Stable for 12 months from date of receipt.
Gene Name:	phosphatidylinositol-4-phosphate 3-kinase catalytic subunit type 2 gamma
Database Link:	NP_004561 Entrez Gene 5288 Human O75747
Synonyms:	PI3K-C2-gamma; PI3K-C2GAMMA
Note:	PIK3C2G Antibody detects endogenous levels of total P3C2G protein
Protein Families:	Druggable Genome
Protein Pathways:	Inositol phosphate metabolism, Metabolic pathways, Phosphatidylinositol signaling system



[View online »](#)

Product images:



Western blot analysis of extracts from A549 cells, using PIK3C2G Antibody. The lane on the right is treated with the synthesized peptide.