

Product datasheet for **TA314340**

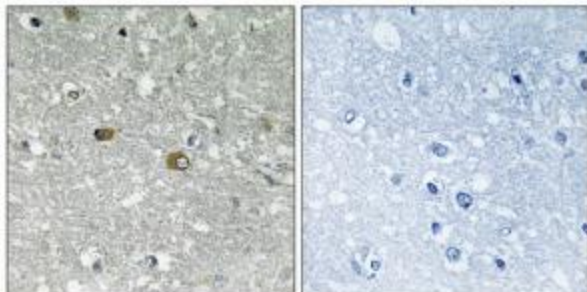
PIGH Rabbit Polyclonal Antibody

Product data:

Product Type:	Primary Antibodies
Applications:	IHC
Recommended Dilution:	IHC: 1:50~1:100, ELISA: 1:40000
Reactivity:	Human, Mouse
Host:	Rabbit
Isotype:	IgG
Clonality:	Polyclonal
Immunogen:	The antiserum was produced against synthesized peptide derived from C-terminal of human PIGH.
Formulation:	Phosphate buffered saline (without Mg ²⁺ and Ca ²⁺), pH 7.4, 150mM NaCl, 0.02% sodium azide and 50% glycerol.
Concentration:	lot specific
Purification:	The antibody was affinity-purified from rabbit antiserum by affinity-chromatography using epitope-specific immunogen.
Conjugation:	Unconjugated
Storage:	Store at -20°C as received.
Stability:	Stable for 12 months from date of receipt.
Gene Name:	phosphatidylinositol glycan anchor biosynthesis class H
Database Link:	NP_004560 Entrez Gene 110417 Mouse Entrez Gene 5283 Human Q14442
Synonyms:	GPI-H
Note:	PIGH antibody detects endogenous levels of total PIGH protein.
Protein Families:	Transmembrane
Protein Pathways:	Glycosylphosphatidylinositol(GPI)-anchor biosynthesis, Metabolic pathways



[View online »](#)

Product images:

Immunohistochemistry analysis of paraffin-embedded human brain tissue using PIGH antibody. The picture on the right is treated with the synthesized peptide.