

Product datasheet for **TA314339**

MASPIN (SERPINB5) Rabbit Polyclonal Antibody

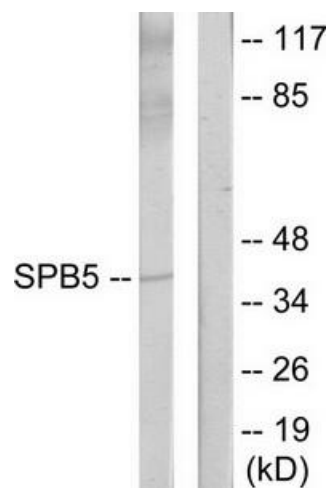
Product data:

Product Type:	Primary Antibodies
Applications:	WB
Recommended Dilution:	WB: 1:500~1:3000, ELISA: 1:20000
Reactivity:	Human, Mouse, Rat
Host:	Rabbit
Isotype:	IgG
Clonality:	Polyclonal
Immunogen:	The antiserum was produced against synthesized peptide derived from internal of human Serpin B5.
Formulation:	Phosphate buffered saline (without Mg ²⁺ and Ca ²⁺), pH 7.4, 150mM NaCl, 0.02% sodium azide and 50% glycerol.
Concentration:	lot specific
Purification:	The antibody was affinity-purified from rabbit antiserum by affinity-chromatography using epitope-specific immunogen.
Conjugation:	Unconjugated
Storage:	Store at -20°C as received.
Stability:	Stable for 12 months from date of receipt.
Gene Name:	serpin family B member 5
Database Link:	NP_002630 Entrez Gene 20724 MouseEntrez Gene 116589 RatEntrez Gene 5268 Human P36952
Synonyms:	maspin; PI5
Note:	Serpin B5 antibody detects endogenous levels of total Serpin B5 protein.
Protein Families:	Druggable Genome, Secreted Protein
Protein Pathways:	p53 signaling pathway



[View online »](#)

Product images:



Western blot analysis of extracts from HeLa cells, using Serpin B5 antibody. The lane on the right is treated with the synthesized peptide.