

## Product datasheet for **TA314335**

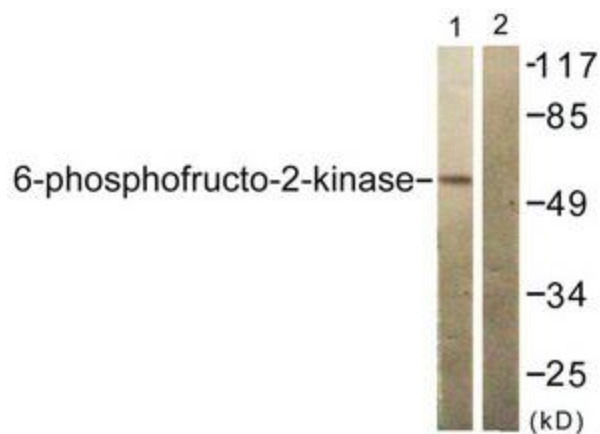
### PFKFB2 Rabbit Polyclonal Antibody

#### Product data:

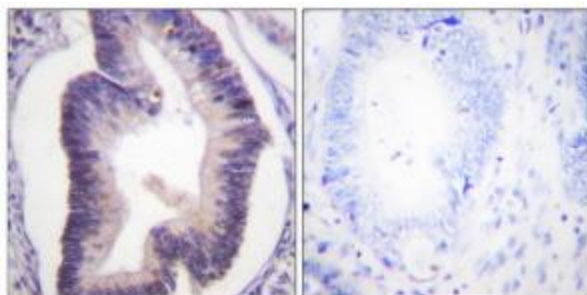
Product Type:	Primary Antibodies
Applications:	IHC, WB
Recommended Dilution:	WB: 1:500~1:3000, IHC: 1:50~1:100, ELISA: 1:5000
Reactivity:	Human, Mouse, Rat
Host:	Rabbit
Isotype:	IgG
Clonality:	Polyclonal
Formulation:	Phosphate buffered saline (without Mg <sup>2+</sup> and Ca <sup>2+</sup> ), pH 7.4, 150mM NaCl, 0.02% sodium azide and 50% glycerol.
Concentration:	lot specific
Purification:	The antibody was affinity-purified from rabbit antiserum by affinity-chromatography using epitope-specific immunogen.
Conjugation:	Unconjugated
Storage:	Store at -20°C as received.
Stability:	Stable for 12 months from date of receipt.
Gene Name:	6-phosphofructo-2-kinase/fructose-2,6-biphosphatase 2
Database Link:	<a href="#">NP_001018063</a> <a href="#">Entrez Gene 18640 Mouse</a> <a href="#">Entrez Gene 24640 Rat</a> <a href="#">Entrez Gene 5208 Human</a> <a href="#">O60825</a>
Synonyms:	FBPase-2; PFK-2
Note:	PFKFB2 (Ab-483) antibody detects endogenous levels of total PFKFB2 protein.
Protein Families:	Druggable Genome
Protein Pathways:	Fructose and mannose metabolism



[View online »](#)

**Product images:**

Western blot analysis of extracts from 293 cells, treated with Heat shock, using PFKFB2 (Ab-483) antibody. The lane on the right is treated with the synthesized peptide.



Immunohistochemistry analysis of paraffin-embedded human colon carcinoma tissue using PFKFB2 (Ab-483) antibody. The picture on the right is treated with the synthesized peptide.