

## Product datasheet for **TA314332**

### PFKFB1 Rabbit Polyclonal Antibody

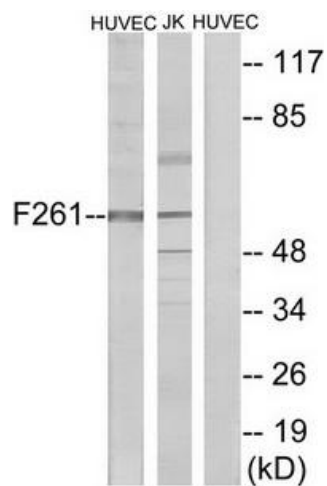
#### Product data:

Product Type:	Primary Antibodies
Applications:	WB
Recommended Dilution:	WB: 1:500~1:3000, ELISA: 1:1000
Reactivity:	Human, Mouse, Rat
Host:	Rabbit
Isotype:	IgG
Clonality:	Polyclonal
Immunogen:	The antiserum was produced against synthesized peptide derived from C-terminal of human PFKFB1.
Formulation:	Phosphate buffered saline (without Mg <sup>2+</sup> and Ca <sup>2+</sup> ), pH 7.4, 150mM NaCl, 0.02% sodium azide and 50% glycerol.
Concentration:	lot specific
Purification:	The antibody was affinity-purified from rabbit antiserum by affinity-chromatography using epitope-specific immunogen.
Conjugation:	Unconjugated
Storage:	Store at -20°C as received.
Stability:	Stable for 12 months from date of receipt.
Gene Name:	6-phosphofructo-2-kinase/fructose-2,6-biphosphatase 1
Database Link:	<a href="#">NP_002616</a> <a href="#">Entrez Gene 18639 Mouse</a> <a href="#">Entrez Gene 24638 Rat</a> <a href="#">Entrez Gene 5207 Human</a> <a href="#">P16118</a>
Synonyms:	F6PK; HL2K; PFRX
Note:	PFKFB1 antibody detects endogenous levels of total PFKFB1 protein.
Protein Families:	Druggable Genome
Protein Pathways:	Fructose and mannose metabolism



[View online »](#)

## Product images:



Western blot analysis of extracts from HUVEC cells and Jurkat cells, using PFKFB1 antibody. The lane on the right is treated with the synthesized peptide.