

## Product datasheet for **TA314328**

### PEX7 Rabbit Polyclonal Antibody

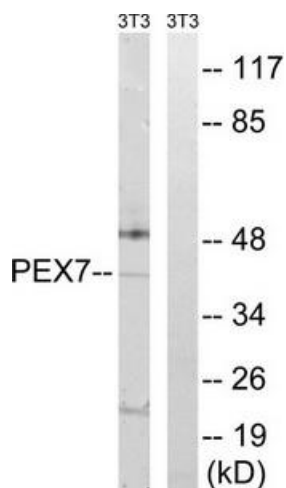
#### Product data:

Product Type:	Primary Antibodies
Applications:	IHC, WB
Recommended Dilution:	WB: 1:500~1:3000, IHC: 1:50~1:100, ELISA: 1:40000
Reactivity:	Human, Mouse, Rat
Host:	Rabbit
Isotype:	IgG
Clonality:	Polyclonal
Immunogen:	The antiserum was produced against synthesized peptide derived from internal of human PEX7.
Formulation:	Phosphate buffered saline (without Mg <sup>2+</sup> and Ca <sup>2+</sup> ), pH 7.4, 150mM NaCl, 0.02% sodium azide and 50% glycerol.
Concentration:	lot specific
Purification:	The antibody was affinity-purified from rabbit antiserum by affinity-chromatography using epitope-specific immunogen.
Conjugation:	Unconjugated
Storage:	Store at -20°C as received.
Stability:	Stable for 12 months from date of receipt.
Gene Name:	peroxisomal biogenesis factor 7
Database Link:	<a href="#">NP_000279</a> <a href="#">Entrez Gene 18634 Mouse</a> <a href="#">Entrez Gene 308718 Rat</a> <a href="#">Entrez Gene 5191 Human</a> <a href="#">O00628</a>
Synonyms:	PBD9B; PTS2R; RCDP1; RD
Note:	PEX7 antibody detects endogenous levels of total PEX7 protein.
Protein Families:	Druggable Genome

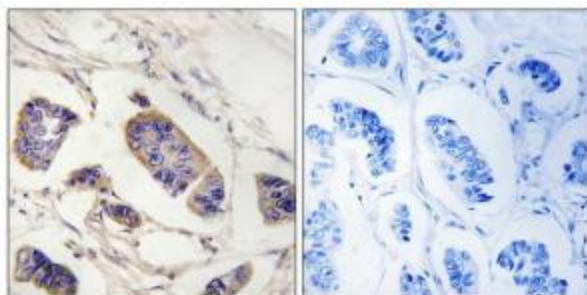


[View online »](#)

Product images:



Western blot analysis of extracts from NIH/3T3 cells, using PEX7 antibody. The lane on the right is treated with the synthesized peptide.



Immunohistochemistry analysis of paraffin-embedded human breast carcinoma tissue, using PEX7 antibody. The picture on the right is treated with the synthesized peptide.