

## Product datasheet for **TA314326**

### PDGF beta (PDGFB) Rabbit Polyclonal Antibody

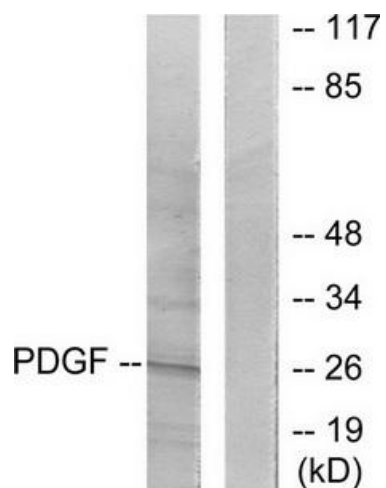
#### Product data:

Product Type:	Primary Antibodies
Applications:	WB
Recommended Dilution:	WB: 1:500~1:3000, ELISA: 1:10000
Reactivity:	Human, Mouse, Rat
Host:	Rabbit
Isotype:	IgG
Clonality:	Polyclonal
Immunogen:	The antiserum was produced against synthesized peptide derived from human PDGFB.
Formulation:	Phosphate buffered saline (without Mg <sup>2+</sup> and Ca <sup>2+</sup> ), pH 7.4, 150mM NaCl, 0.02% sodium azide and 50% glycerol.
Concentration:	lot specific
Purification:	The antibody was affinity-purified from rabbit antiserum by affinity-chromatography using epitope-specific immunogen.
Conjugation:	Unconjugated
Storage:	Store at -20°C as received.
Stability:	Stable for 12 months from date of receipt.
Gene Name:	platelet derived growth factor subunit B
Database Link:	<a href="#">NP_002599</a> <a href="#">Entrez Gene 18591 Mouse</a> <a href="#">Entrez Gene 24628 Rat</a> <a href="#">Entrez Gene 5155 Human</a> <a href="#">P01127</a>
Synonyms:	c-sis; IBGC5; PDGF-2; PDGF2; SIS; SSV
Note:	PDGFB antibody detects endogenous levels of total PDGFB protein.
Protein Families:	Druggable Genome
Protein Pathways:	Cytokine-cytokine receptor interaction, Focal adhesion, Gap junction, Glioma, MAPK signaling pathway, Melanoma, Pathways in cancer, Prostate cancer, Regulation of actin cytoskeleton, Renal cell carcinoma



[View online »](#)

## Product images:



Western blot analysis of extracts from NIH/3T3 cells, using PDGFB antibody (#TA314326). The lane on the right is treated with the synthesized peptide.