

## Product datasheet for **TA314325**

### PCTAIRE2 (CDK17) Rabbit Polyclonal Antibody

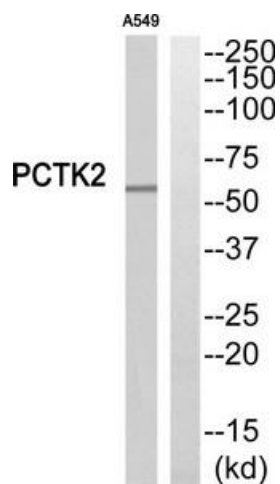
#### Product data:

Product Type:	Primary Antibodies
Applications:	WB
Recommended Dilution:	WB: 1:500~1:3000, ELISA: 1:10000
Reactivity:	Human, Mouse, Rat
Host:	Rabbit
Isotype:	IgG
Clonality:	Polyclonal
Immunogen:	The antiserum was produced against synthesized peptide derived from Internal of human CDK17.
Formulation:	Phosphate buffered saline (without Mg <sup>2+</sup> and Ca <sup>2+</sup> ), pH 7.4, 150mM NaCl, 0.02% sodium azide and 50% glycerol.
Concentration:	lot specific
Purification:	The antibody was affinity-purified from rabbit antiserum by affinity-chromatography using epitope-specific immunogen.
Conjugation:	Unconjugated
Storage:	Store at -20°C as received.
Stability:	Stable for 12 months from date of receipt.
Gene Name:	cyclin-dependent kinase 17
Database Link:	<a href="#">NP_001163935</a> <a href="#">Entrez Gene 237459 MouseEntrez Gene 314743 RatEntrez Gene 5128 Human Q00537</a>
Synonyms:	PCTAIRE2; PCK2
Note:	PCK2 Antibody detects endogenous levels of total CDK17 protein
Protein Families:	Druggable Genome, Protein Kinase



[View online »](#)

## Product images:



Western blot analysis of extracts from A549 cells, using PCTK2 Antibody. The lane on the right is treated with the synthesized peptide.