

## Product datasheet for **TA314323**

### PAK3 Rabbit Polyclonal Antibody

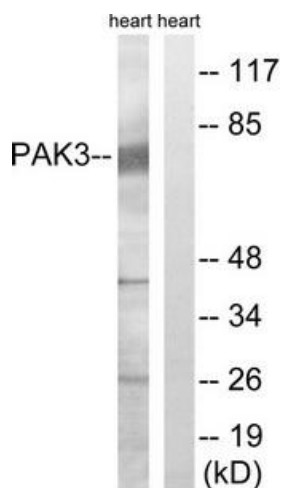
#### Product data:

Product Type:	Primary Antibodies
Applications:	WB
Recommended Dilution:	WB: 1:500~1:3000, ELISA: 1:40000
Reactivity:	Human, Mouse, Rat
Host:	Rabbit
Isotype:	IgG
Clonality:	Polyclonal
Immunogen:	The antiserum was produced against synthesized non-phosphopeptide derived from human PAK3 around the phosphorylation site of serine 154 (Y-M-SP-F-T).
Formulation:	Phosphate buffered saline (without Mg <sup>2+</sup> and Ca <sup>2+</sup> ), pH 7.4, 150mM NaCl, 0.02% sodium azide and 50% glycerol.
Concentration:	lot specific
Purification:	The antibody was affinity-purified from rabbit antiserum by affinity-chromatography using epitope-specific immunogen.
Conjugation:	Unconjugated
Storage:	Store at -20°C as received.
Stability:	Stable for 12 months from date of receipt.
Gene Name:	p21 (RAC1) activated kinase 3
Database Link:	<a href="#">NP_001121638</a> <a href="#">Entrez Gene 18481 Mouse</a> <a href="#">Entrez Gene 29433 Rat</a> <a href="#">Entrez Gene 5063 Human</a> <a href="#">O75914</a>
Synonyms:	ARA; beta-PAK; bPAK; MRX30; MRX47; OPHN3; PAK-3; PAK3beta
Note:	PAK3 (Ab-154) antibody detects endogenous levels of total PAK3 protein.
Protein Families:	Druggable Genome, Protein Kinase, Stem cell - Pluripotency
Protein Pathways:	Axon guidance, ErbB signaling pathway, Focal adhesion, Regulation of actin cytoskeleton, Renal cell carcinoma, T cell receptor signaling pathway

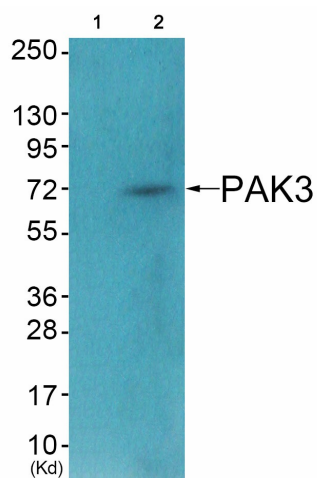


[View online »](#)

Product images:



Western blot analysis of extracts from rat heart, using PAK3 (Ab-154) antibody. The lane on the right is treated with the synthesized peptide.



Western blot analysis of extracts from HeLa cells (Lane 2), using PAK3 (Ab-154) Antibody. The lane on the left is treated with synthesized peptide.