

Product datasheet for **TA314321**

PAK2 Rabbit Polyclonal Antibody

Product data:

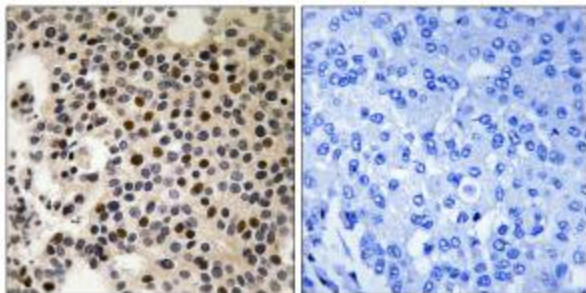
Product Type:	Primary Antibodies
Applications:	IHC
Recommended Dilution:	IHC: 1:50~1:100, ELISA: 1:1000
Reactivity:	Human, Mouse, Rat
Modifications:	Phospho-specific
Host:	Rabbit
Isotype:	IgG
Clonality:	Polyclonal
Immunogen:	The antiserum was produced against synthesized phosphopeptide derived from human PAK2 around the phosphorylation site of serine 197 (T-R-SP-V-I).
Formulation:	Phosphate buffered saline (without Mg ²⁺ and Ca ²⁺), pH 7.4, 150mM NaCl, 0.02% sodium azide and 50% glycerol.
Concentration:	lot specific
Purification:	The antibody was affinity-purified from rabbit antiserum by affinity-chromatography using epitope-specific immunogen.
Conjugation:	Unconjugated
Storage:	Store at -20°C as received.
Stability:	Stable for 12 months from date of receipt.
Gene Name:	p21 (RAC1) activated kinase 2
Database Link:	NP_002568 Entrez Gene 29432 Rat Entrez Gene 224105 Mouse Entrez Gene 5062 Human Q13177
Synonyms:	PAK65; PAKgamma
Note:	PAK2 (Phospho-Ser197) antibody detects endogenous levels of PAK2 only when phosphorylated at serine 197.
Protein Families:	Druggable Genome, Protein Kinase



[View online »](#)

Protein Pathways: Axon guidance, ErbB signaling pathway, Focal adhesion, MAPK signaling pathway, Regulation of actin cytoskeleton, Renal cell carcinoma, T cell receptor signaling pathway

Product images:



Immunohistochemistry analysis of paraffin-embedded human breast carcinoma tissue, using PAK2 (Phospho-Ser197) antibody. The picture on the right is treated with the synthesized peptide.