

## Product datasheet for **TA314318**

### PAK2 Rabbit Polyclonal Antibody

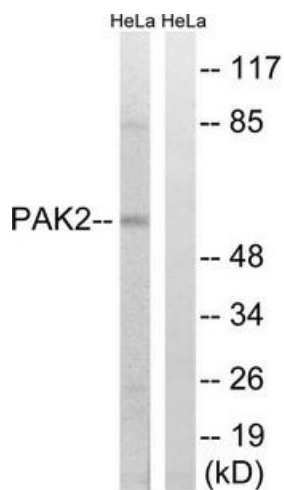
#### Product data:

Product Type:	Primary Antibodies
Applications:	WB
Recommended Dilution:	WB: 1:500~1:3000, ELISA: 1:20000
Reactivity:	Human, Mouse, Rat
Host:	Rabbit
Isotype:	IgG
Clonality:	Polyclonal
Immunogen:	The antiserum was produced against synthesized non-phosphopeptide derived from human PAK2 around the phosphorylation site of serine 141 (Y-L-SP-F-T).
Formulation:	Phosphate buffered saline (without Mg <sup>2+</sup> and Ca <sup>2+</sup> ), pH 7.4, 150mM NaCl, 0.02% sodium azide and 50% glycerol.
Concentration:	lot specific
Purification:	The antibody was affinity-purified from rabbit antiserum by affinity-chromatography using epitope-specific immunogen.
Conjugation:	Unconjugated
Storage:	Store at -20°C as received.
Stability:	Stable for 12 months from date of receipt.
Gene Name:	p21 (RAC1) activated kinase 2
Database Link:	<a href="#">NP_002568</a> <a href="#">Entrez Gene 29432 Rat</a> <a href="#">Entrez Gene 224105 Mouse</a> <a href="#">Entrez Gene 5062 Human</a> <a href="#">Q13177</a>
Synonyms:	PAK65; PAKgamma
Note:	PAK2 (Ab-141) antibody detects endogenous levels of total PAK2 protein.
Protein Families:	Druggable Genome, Protein Kinase
Protein Pathways:	Axon guidance, ErbB signaling pathway, Focal adhesion, MAPK signaling pathway, Regulation of actin cytoskeleton, Renal cell carcinoma, T cell receptor signaling pathway



[View online »](#)

## Product images:



Western blot analysis of extracts from HeLa cells, treated with TSA (400nM, 24hours), using PAK2 (Ab-141) antibody. The lane on the right is treated with the synthesized peptide.