

Product datasheet for **TA314311**

Solute carrier family 22 member 18 (SLC22A18) Rabbit Polyclonal Antibody

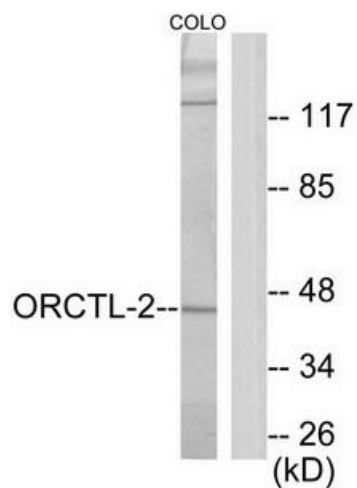
Product data:

Product Type:	Primary Antibodies
Applications:	WB
Recommended Dilution:	WB: 1:500~1:3000, ELISA: 1:5000
Reactivity:	Human
Host:	Rabbit
Isotype:	IgG
Clonality:	Polyclonal
Immunogen:	The antiserum was produced against synthesized peptide derived from C-terminal of human ORCTL-2.
Formulation:	Phosphate buffered saline (without Mg ²⁺ and Ca ²⁺), pH 7.4, 150mM NaCl, 0.02% sodium azide and 50% glycerol.
Concentration:	lot specific
Purification:	The antibody was affinity-purified from rabbit antiserum by affinity-chromatography using epitope-specific immunogen.
Conjugation:	Unconjugated
Storage:	Store at -20°C as received.
Stability:	Stable for 12 months from date of receipt.
Gene Name:	solute carrier family 22 member 18
Database Link:	NP_002546 Entrez Gene 5002 Human Q96BI1
Synonyms:	BWR1A; BWSCR1A; HET; IMPT1; ITM; ORCTL2; p45-BWR1A; SLC22A1L; TSSC5
Note:	ORCTL-2 antibody detects endogenous levels of total ORCTL-2 protein.
Protein Families:	Druggable Genome, Transmembrane



[View online »](#)

Product images:



Western blot analysis of extracts from COLO205 cells, using ORCTL-2 antibody. The lane on the right is treated with the synthesized peptide.