

Product datasheet for **TA314305**

Homeobox protein SIX6 (SIX6) Rabbit Polyclonal Antibody

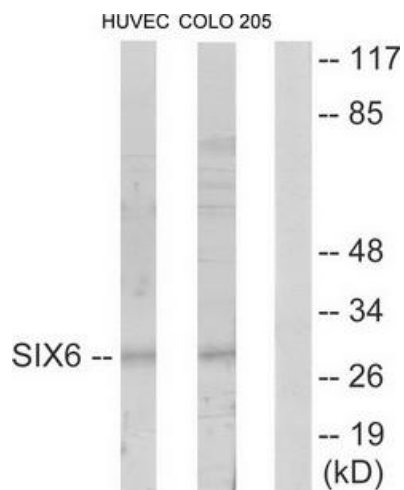
Product data:

Product Type:	Primary Antibodies
Applications:	IF, WB
Recommended Dilution:	WB: 1:500~1:3000, IF: 1:100~1:500, ELISA: 1:5000
Reactivity:	Human, Mouse, Rat
Host:	Rabbit
Isotype:	IgG
Clonality:	Polyclonal
Immunogen:	The antiserum was produced against synthesized peptide derived from internal of human SIX6
Formulation:	Phosphate buffered saline (without Mg ²⁺ and Ca ²⁺), pH 7.4, 150mM NaCl, 0.02% sodium azide and 50% glycerol.
Concentration:	lot specific
Purification:	The antibody was affinity-purified from rabbit antiserum by affinity-chromatography using epitope-specific immunogen.
Conjugation:	Unconjugated
Storage:	Store at -20°C as received.
Stability:	Stable for 12 months from date of receipt.
Gene Name:	SIX homeobox 6
Database Link:	NP_031400 Entrez Gene 20476 MouseEntrez Gene 314221 RatEntrez Gene 4990 Human O95475
Synonyms:	MCOPCT2; ODRMD; OPTX2; Six9
Note:	SIX6 antibody detects endogenous levels of total SIX6 protein.

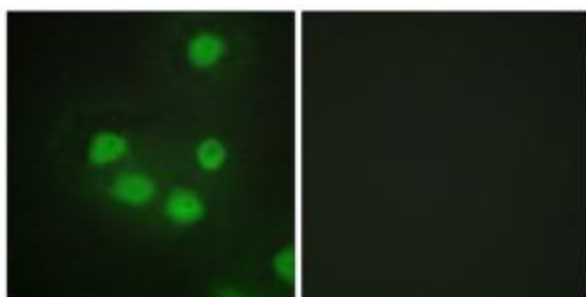


[View online »](#)

Product images:



Western blot analysis of extracts from HUVEC cells and COLO205 cells, using SIX6 antibody. The lane on the right is treated with the synthesized peptide.



Immunofluorescence analysis of HepG2 cells, using SIX6 antibody. The picture on the right is treated with the synthesized peptide.