

Product datasheet for **TA314303**

Mu Opioid Receptor (OPRM1) Rabbit Polyclonal Antibody

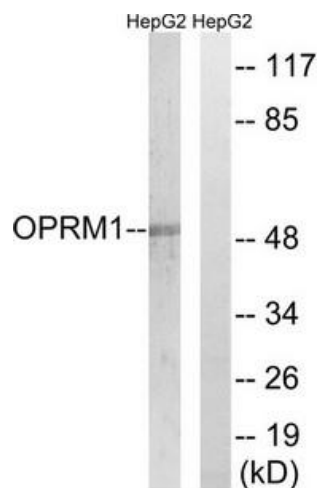
Product data:

Product Type:	Primary Antibodies
Applications:	IHC, WB
Recommended Dilution:	WB: 1:500~1:3000, IHC: 1:50~1:100, ELISA: 1:40000
Reactivity:	Human
Host:	Rabbit
Isotype:	IgG
Clonality:	Polyclonal
Immunogen:	The antiserum was produced against synthesized peptide derived from internal of human OPRM1.
Formulation:	Phosphate buffered saline (without Mg ²⁺ and Ca ²⁺), pH 7.4, 150mM NaCl, 0.02% sodium azide and 50% glycerol.
Concentration:	lot specific
Purification:	The antibody was affinity-purified from rabbit antiserum by affinity-chromatography using epitope-specific immunogen.
Conjugation:	Unconjugated
Storage:	Store at -20°C as received.
Stability:	Stable for 12 months from date of receipt.
Gene Name:	opioid receptor mu 1
Database Link:	NP_000905 Entrez Gene 4988 Human P35372
Synonyms:	LMOR; M-OR-1; MOP; MOR; MOR1; OPRM
Note:	OPRM1 antibody detects endogenous levels of total OPRM1 protein.
Protein Families:	Druggable Genome, GPCR, Transmembrane
Protein Pathways:	Neuroactive ligand-receptor interaction

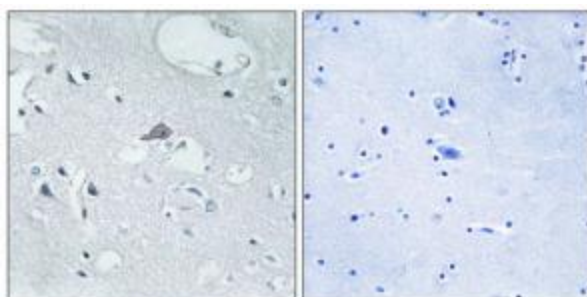


[View online »](#)

Product images:



Western blot analysis of extracts from HeLa cells, using OPRM1 antibody. The lane on the right is treated with the synthesized peptide.



Immunohistochemistry analysis of paraffin-embedded human brain tissue using OPRM1 antibody. The picture on the right is treated with the synthesized peptide.