

## Product datasheet for **TA314302**

### Kappa Opioid Receptor (OPRK1) Rabbit Polyclonal Antibody

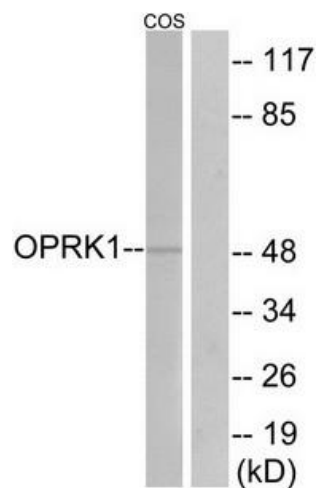
#### Product data:

Product Type:	Primary Antibodies
Applications:	WB
Recommended Dilution:	WB: 1:500~1:3000, ELISA: 1:1000
Reactivity:	Human, Mouse, Rat
Host:	Rabbit
Isotype:	IgG
Clonality:	Polyclonal
Immunogen:	The antiserum was produced against synthesized peptide derived from internal of human OPRK1.
Formulation:	Phosphate buffered saline (without Mg <sup>2+</sup> and Ca <sup>2+</sup> ), pH 7.4, 150mM NaCl, 0.02% sodium azide and 50% glycerol.
Concentration:	lot specific
Purification:	The antibody was affinity-purified from rabbit antiserum by affinity-chromatography using epitope-specific immunogen.
Conjugation:	Unconjugated
Storage:	Store at -20°C as received.
Stability:	Stable for 12 months from date of receipt.
Gene Name:	opioid receptor kappa 1
Database Link:	<a href="#">NP_000903</a> <a href="#">Entrez Gene 18387 Mouse</a> <a href="#">Entrez Gene 29335 Rat</a> <a href="#">Entrez Gene 4986 Human</a> <a href="#">P41145</a>
Synonyms:	K-OR-1; KOR; KOR-1; OPRK
Note:	OPRK1 antibody detects endogenous levels of total OPRK1 protein.
Protein Families:	Druggable Genome, GPCR, Transmembrane
Protein Pathways:	Neuroactive ligand-receptor interaction



[View online »](#)

## Product images:



Western blot analysis of extracts from COS-7 cells, using OPRK1 antibody. The lane on the right is treated with the synthesized peptide.