

Product datasheet for **TA314296**

ornithine aminotransferase (OAT) Rabbit Polyclonal Antibody

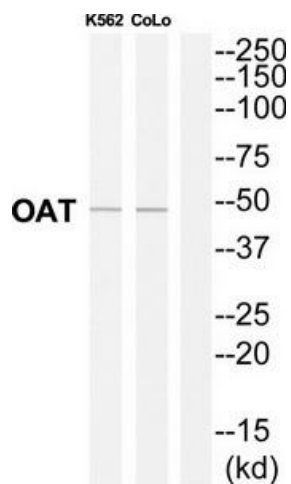
Product data:

Product Type:	Primary Antibodies
Applications:	WB
Recommended Dilution:	WB: 1:500~1:3000, ELISA: 1:1000
Reactivity:	Human, Mouse, Rat
Host:	Rabbit
Isotype:	IgG
Clonality:	Polyclonal
Immunogen:	The antiserum was produced against synthesized peptide derived from Internal of human OAT.
Formulation:	Phosphate buffered saline (without Mg ²⁺ and Ca ²⁺), pH 7.4, 150mM NaCl, 0.02% sodium azide and 50% glycerol.
Purification:	The antibody was affinity-purified from rabbit antiserum by affinity-chromatography using epitope-specific immunogen.
Conjugation:	Unconjugated
Storage:	Store at -20°C as received.
Stability:	Stable for 12 months from date of receipt.
Gene Name:	ornithine aminotransferase
Database Link:	NP_000265 Entrez Gene 18242 Mouse Entrez Gene 64313 Rat Entrez Gene 4942 Human P04181
Synonyms:	GACR; HOGA; OATASE; OKT
Note:	OAT antibody detects endogenous levels of total OAT protein.
Protein Families:	Druggable Genome
Protein Pathways:	Arginine and proline metabolism, Metabolic pathways



[View online »](#)

Product images:



Western blot analysis of extracts from K562/COLO205 cells, using OAT antibody. The lane on the right is treated with the synthesized peptide.