

Product datasheet for **TA314288**

NSF Rabbit Polyclonal Antibody

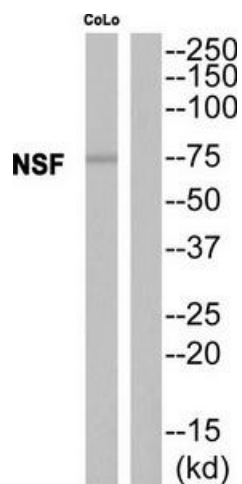
Product data:

Product Type:	Primary Antibodies
Applications:	WB
Recommended Dilution:	WB: 1:500~1:3000, ELISA: 1:40000
Reactivity:	Human, Mouse, Rat
Host:	Rabbit
Isotype:	IgG
Clonality:	Polyclonal
Immunogen:	The antiserum was produced against synthesized peptide derived from internal of human NSF.
Formulation:	Phosphate buffered saline (without Mg ²⁺ and Ca ²⁺), pH 7.4, 150mM NaCl, 0.02% sodium azide and 50% glycerol.
Concentration:	lot specific
Purification:	The antibody was affinity-purified from rabbit antiserum by affinity-chromatography using epitope-specific immunogen.
Conjugation:	Unconjugated
Storage:	Store at -20°C as received.
Stability:	Stable for 12 months from date of receipt.
Gene Name:	N-ethylmaleimide sensitive factor
Database Link:	NP_006169 Entrez Gene 18195 Mouse Entrez Gene 60355 Rat Entrez Gene 4905 Human P46459
Synonyms:	SKD2
Note:	NSF antibody detects endogenous levels of total NSF protein.
Protein Families:	Protease



[View online »](#)

Product images:



Western blot analysis of extracts from CoLo cells, using NSF antibody. The lane on the right is treated with the synthesized peptide.