

Product datasheet for **TA314284**

NRF1 Rabbit Polyclonal Antibody

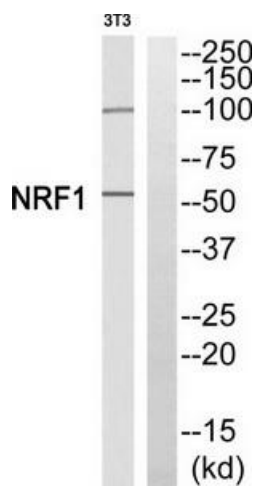
Product data:

Product Type:	Primary Antibodies
Applications:	WB
Recommended Dilution:	WB: 1:500~1:3000, ELISA: 1:1000
Reactivity:	Human, Mouse, Rat
Host:	Rabbit
Isotype:	IgG
Clonality:	Polyclonal
Immunogen:	The antiserum was produced against synthesized peptide derived from internal of human NRF1.
Formulation:	Phosphate buffered saline (without Mg ²⁺ and Ca ²⁺), pH 7.4, 150mM NaCl, 0.02% sodium azide and 50% glycerol.
Concentration:	lot specific
Purification:	The antibody was affinity-purified from rabbit antiserum by affinity-chromatography using epitope-specific immunogen.
Conjugation:	Unconjugated
Storage:	Store at -20°C as received.
Stability:	Stable for 12 months from date of receipt.
Gene Name:	nuclear respiratory factor 1
Database Link:	NP_001035199 Entrez Gene 18181 Mouse Entrez Gene 312195 Rat Entrez Gene 4899 Human Q16656
Synonyms:	ALPHA-PAL
Note:	NRF1 antibody detects endogenous levels of total NRF1 protein.
Protein Families:	Transcription Factors
Protein Pathways:	Huntington's disease



[View online »](#)

Product images:



Western blot analysis of extracts from 3T3 cells, using NRF1 antibody. The lane on the right is treated with the synthesized peptide.