

Product datasheet for **TA314282**

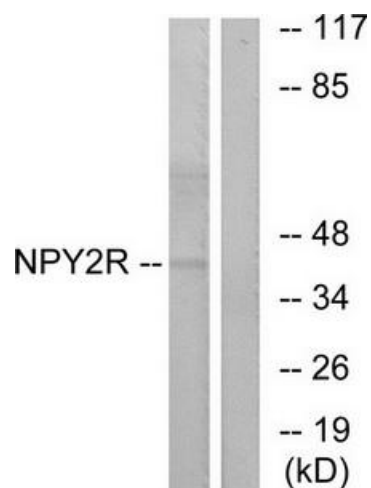
NPY2R Rabbit Polyclonal Antibody

Product data:

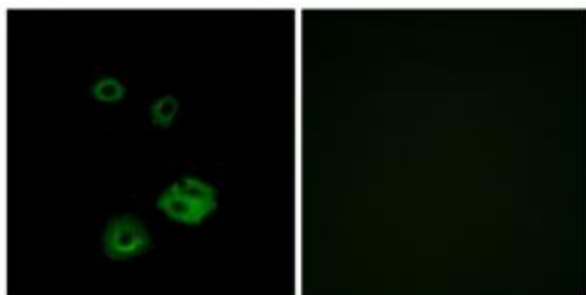
Product Type:	Primary Antibodies
Applications:	IF, WB
Recommended Dilution:	WB: 1:500~1:3000, IF: 1:100~1:500, ELISA: 1:1000
Reactivity:	Human, Mouse, Rat
Host:	Rabbit
Isotype:	IgG
Clonality:	Polyclonal
Immunogen:	The antiserum was produced against synthesized peptide derived from internal of human NPY2R.
Formulation:	Phosphate buffered saline (without Mg ²⁺ and Ca ²⁺), pH 7.4, 150mM NaCl, 0.02% sodium azide and 50% glycerol.
Concentration:	lot specific
Purification:	The antibody was affinity-purified from rabbit antiserum by affinity-chromatography using epitope-specific immunogen.
Conjugation:	Unconjugated
Storage:	Store at -20°C as received.
Stability:	Stable for 12 months from date of receipt.
Gene Name:	neuropeptide Y receptor Y2
Database Link:	NP_000901 Entrez Gene 18167 Mouse Entrez Gene 66024 Rat Entrez Gene 4887 Human P49146
Synonyms:	NPY2-R
Note:	NPY2R antibody detects endogenous levels of total NPY2R protein.
Protein Families:	Druggable Genome, GPCR, Transmembrane
Protein Pathways:	Neuroactive ligand-receptor interaction



[View online »](#)

Product images:

Western blot analysis of extracts from HepG2 cells, using NPY2R antibody. The lane on the right is treated with the synthesized peptide.



Immunofluorescence analysis of A549 cells, using NPY2R antibody. The picture on the right is treated with the synthesized peptide.