

Product datasheet for **TA314278**

NOTCH2 Rabbit Polyclonal Antibody

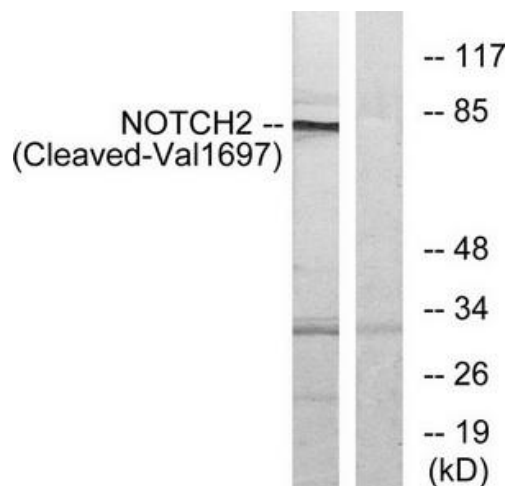
Product data:

| | |
|-----------------------|---|
| Product Type: | Primary Antibodies |
| Applications: | WB |
| Recommended Dilution: | WB: 1:500~1:3000, ELISA: 1:10000 |
| Reactivity: | Human, Mouse, Rat |
| Host: | Rabbit |
| Isotype: | IgG |
| Clonality: | Polyclonal |
| Immunogen: | The antiserum was produced against synthesized peptide derived from human NOTCH2. |
| Formulation: | Phosphate buffered saline (without Mg ²⁺ and Ca ²⁺), pH 7.4, 150mM NaCl, 0.02% sodium azide and 50% glycerol. |
| Concentration: | lot specific |
| Purification: | The antibody was affinity-purified from rabbit antiserum by affinity-chromatography using epitope-specific immunogen. |
| Conjugation: | Unconjugated |
| Storage: | Store at -20°C as received. |
| Stability: | Stable for 12 months from date of receipt. |
| Gene Name: | notch 2 |
| Database Link: | NP_077719 Entrez Gene 18129 Mouse Entrez Gene 29492 Rat Entrez Gene 4853 Human Q04721 |
| Synonyms: | AGS2; HJCYS; hN2 |
| Note: | NOTCH2 (Cleaved-Val1697) antibody detects endogenous levels of fragment of activated NOTCH2 resulting from cleavage adjacent to Val1697. |
| Protein Families: | Druggable Genome, Transmembrane |
| Protein Pathways: | Dorso-ventral axis formation, Notch signaling pathway |



[View online »](#)

Product images:



Western blot analysis of extracts from Jurkat cells, treated with etoposide (25uM, 24hours), using NOTCH2 (Cleaved-Val1697) antibody. The lane on the right is treated with the synthesized peptide.