

## Product datasheet for **TA314277**

### NOTCH2 Rabbit Polyclonal Antibody

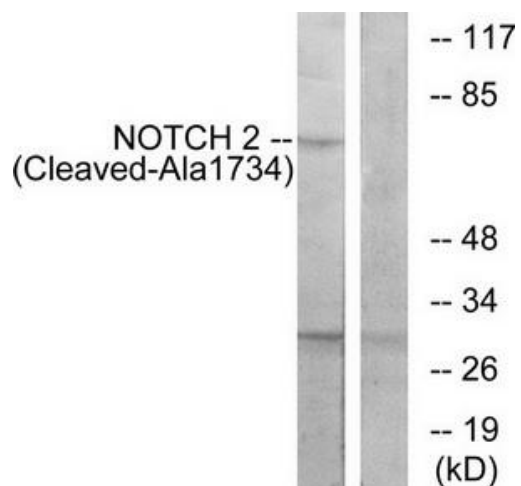
#### Product data:

Product Type:	Primary Antibodies
Applications:	WB
Recommended Dilution:	WB: 1:500~1:3000, ELISA: 1:10000
Reactivity:	Human, Mouse, Rat
Host:	Rabbit
Isotype:	IgG
Clonality:	Polyclonal
Immunogen:	The antiserum was produced against synthesized peptide derived from human NOTCH2.
Formulation:	Phosphate buffered saline (without Mg <sup>2+</sup> and Ca <sup>2+</sup> ), pH 7.4, 150mM NaCl, 0.02% sodium azide and 50% glycerol.
Concentration:	lot specific
Purification:	The antibody was affinity-purified from rabbit antiserum by affinity-chromatography using epitope-specific immunogen.
Conjugation:	Unconjugated
Storage:	Store at -20°C as received.
Stability:	Stable for 12 months from date of receipt.
Gene Name:	notch 2
Database Link:	<a href="#">NP_077719</a> <a href="#">Entrez Gene 18129 Mouse</a> <a href="#">Entrez Gene 29492 Rat</a> <a href="#">Entrez Gene 4853 Human</a> <a href="#">Q04721</a>
Synonyms:	AGS2; HJCYS; hN2
Note:	NOTCH2 (Cleaved-Ala1734) antibody detects endogenous levels of fragment of activated NOTCH2 resulting from cleavage adjacent to Ala1734.
Protein Families:	Druggable Genome, Transmembrane
Protein Pathways:	Dorso-ventral axis formation, Notch signaling pathway



[View online »](#)

## Product images:



Western blot analysis of extracts from Jurkat cells, treated with etoposide (25uM, 24hours), using NOTCH2 (Cleaved-Ala1734) antibody. The lane on the right is treated with the synthesized peptide.