

Product datasheet for **TA314275**

CNOT2 Rabbit Polyclonal Antibody

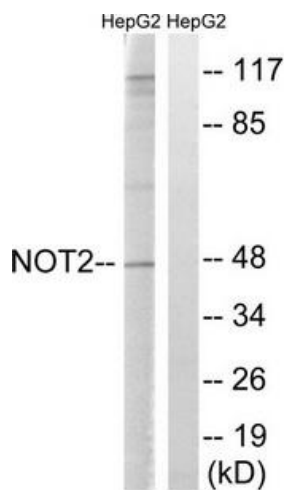
Product data:

Product Type:	Primary Antibodies
Applications:	WB
Recommended Dilution:	WB: 1:500~1:3000, ELISA: 1:5000
Reactivity:	Human, Mouse, Rat
Host:	Rabbit
Isotype:	IgG
Clonality:	Polyclonal
Immunogen:	The antiserum was produced against synthesized non-phosphopeptide derived from human CNOT2 around the phosphorylation site of serine 101 (S-L-SP-Q-G).
Formulation:	Phosphate buffered saline (without Mg ²⁺ and Ca ²⁺), pH 7.4, 150mM NaCl, 0.02% sodium azide and 50% glycerol.
Concentration:	lot specific
Purification:	The antibody was affinity-purified from rabbit antiserum by affinity-chromatography using epitope-specific immunogen.
Conjugation:	Unconjugated
Storage:	Store at -20°C as received.
Stability:	Stable for 12 months from date of receipt.
Gene Name:	CCR4-NOT transcription complex subunit 2
Database Link:	NP_055330 Entrez Gene 72068 Mouse Entrez Gene 299805 Rat Entrez Gene 4848 Human Q9NZN8
Synonyms:	CDC36; HSPC131; NOT2; NOT2H
Note:	CNOT2 (Ab-101) antibody detects endogenous levels of total CNOT2 protein.
Protein Families:	Transcription Factors
Protein Pathways:	RNA degradation



[View online »](#)

Product images:



Western blot analysis of extracts from HepG2 cells, treated with starved (24hours), using CNOT2 (Ab-101) antibody. The lane on the right is treated with the synthesized peptide.