

Product datasheet for **TA314272**

eNOS (NOS3) Rabbit Polyclonal Antibody

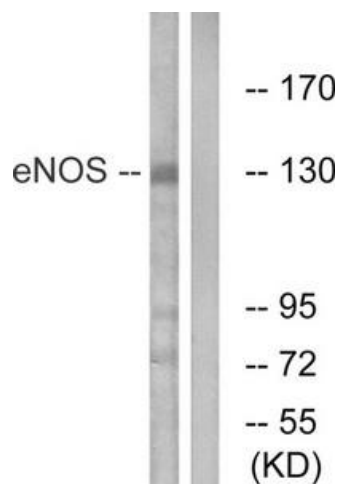
Product data:

Product Type:	Primary Antibodies
Applications:	WB
Recommended Dilution:	WB: 1:500~1:3000, ELISA: 1:40000
Reactivity:	Human, Mouse, Rat
Host:	Rabbit
Isotype:	IgG
Clonality:	Polyclonal
Immunogen:	The antiserum was produced against synthesized non-phosphopeptide derived from human eNOS around the phosphorylation site of serine 615 (F-N-SP-I-S)
Formulation:	Phosphate buffered saline (without Mg ²⁺ and Ca ²⁺), pH 7.4, 150mM NaCl, 0.02% sodium azide and 50% glycerol.
Concentration:	lot specific
Purification:	The antibody was affinity-purified from rabbit antiserum by affinity-chromatography using epitope-specific immunogen.
Conjugation:	Unconjugated
Storage:	Store at -20°C as received.
Stability:	Stable for 12 months from date of receipt.
Gene Name:	nitric oxide synthase 3
Database Link:	NP_000594 Entrez Gene 18127 Mouse Entrez Gene 24600 Rat Entrez Gene 4846 Human P29474
Synonyms:	ECNOS; eNOS
Note:	eNOS (Ab-615) antibody detects endogenous levels of total eNOS protein.
Protein Families:	Druggable Genome
Protein Pathways:	Alzheimer's disease, Amyotrophic lateral sclerosis (ALS), Arginine and proline metabolism, Calcium signaling pathway, Long-term depression, Metabolic pathways, Pathways in cancer, Small cell lung cancer, VEGF signaling pathway

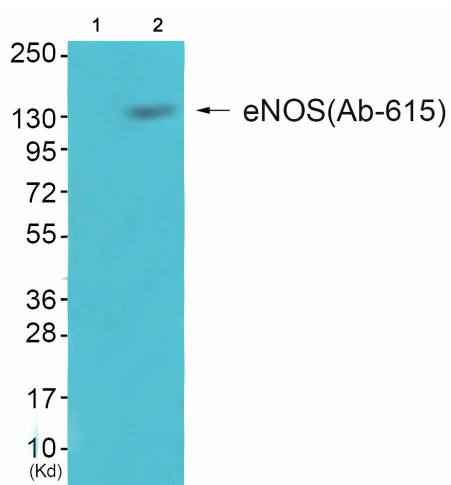


[View online »](#)

Product images:



Western blot analysis of extracts from Jurkat cells, using eNOS (Ab-615) antibody. The lane on the right is treated with the synthesized peptide.



Western blot analysis of extracts from JK cells (Lane 2), using eNOS (Ab-615) Antibody. The lane on the left is treated with synthesized peptide.