

Product datasheet for **TA314266**

iNOS (NOS2) Rabbit Polyclonal Antibody

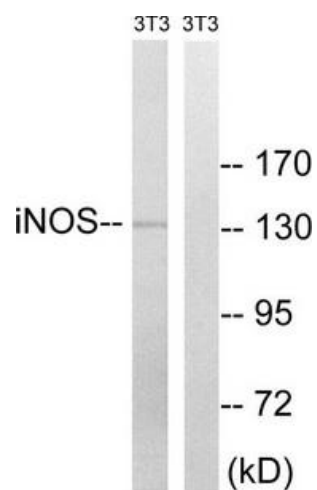
Product data:

Product Type:	Primary Antibodies
Applications:	WB
Recommended Dilution:	WB: 1:500~1:3000, ELISA: 1:10000
Reactivity:	Human, Mouse, Rat
Host:	Rabbit
Isotype:	IgG
Clonality:	Polyclonal
Immunogen:	The antiserum was produced against synthesized non-phosphopeptide derived from human iNOS around the phosphorylation site of tyrosine 151 (Q-Y-YP-G-S).
Formulation:	Phosphate buffered saline (without Mg ²⁺ and Ca ²⁺), pH 7.4, 150mM NaCl, 0.02% sodium azide and 50% glycerol.
Concentration:	lot specific
Purification:	The antibody was affinity-purified from rabbit antiserum by affinity-chromatography using epitope-specific immunogen.
Conjugation:	Unconjugated
Storage:	Store at -20°C as received.
Stability:	Stable for 12 months from date of receipt.
Gene Name:	nitric oxide synthase 2
Database Link:	NP_000616 Entrez Gene 18126 MouseEntrez Gene 24599 RatEntrez Gene 4843 Human P35228
Synonyms:	HEP-NOS; INOS; NOS; NOS2A
Note:	iNOS (Ab-151) antibody detects endogenous levels of total iNOS protein.
Protein Families:	Druggable Genome
Protein Pathways:	Alzheimer's disease, Amyotrophic lateral sclerosis (ALS), Arginine and proline metabolism, Calcium signaling pathway, Long-term depression, Metabolic pathways, Pathways in cancer, Small cell lung cancer



[View online »](#)

Product images:



Western blot analysis of extracts from 3T3 cells, using iNOS (Ab-151) antibody. The lane on the right is treated with the synthesized peptide.