

Product datasheet for **TA314265**

iNOS (NOS2) Rabbit Polyclonal Antibody

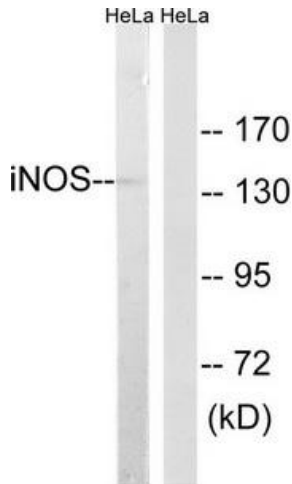
Product data:

Product Type:	Primary Antibodies
Applications:	IF, IHC, WB
Recommended Dilution:	WB: 1:500~1:3000, IHC: 1:50~1:100, IF: 1:100~1:500, ELISA: 1:20000
Reactivity:	Human
Host:	Rabbit
Isotype:	IgG
Clonality:	Polyclonal
Immunogen:	The antiserum was produced against synthesized peptide derived from human iNOS.
Formulation:	Phosphate buffered saline (without Mg ²⁺ and Ca ²⁺), pH 7.4, 150mM NaCl, 0.02% sodium azide and 50% glycerol.
Concentration:	lot specific
Purification:	The antibody was affinity-purified from rabbit antiserum by affinity-chromatography using epitope-specific immunogen.
Conjugation:	Unconjugated
Storage:	Store at -20°C as received.
Stability:	Stable for 12 months from date of receipt.
Gene Name:	nitric oxide synthase 2
Database Link:	NP_000616 Entrez Gene 4843 Human P35228
Synonyms:	HEP-NOS; INOS; NOS; NOS2A
Note:	iNOS antibody detects endogenous levels of total iNOS protein.
Protein Families:	Druggable Genome
Protein Pathways:	Alzheimer's disease, Amyotrophic lateral sclerosis (ALS), Arginine and proline metabolism, Calcium signaling pathway, Long-term depression, Metabolic pathways, Pathways in cancer, Small cell lung cancer

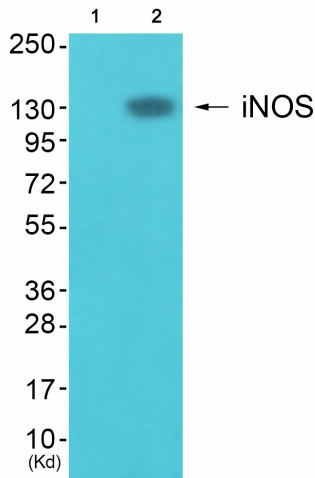


[View online »](#)

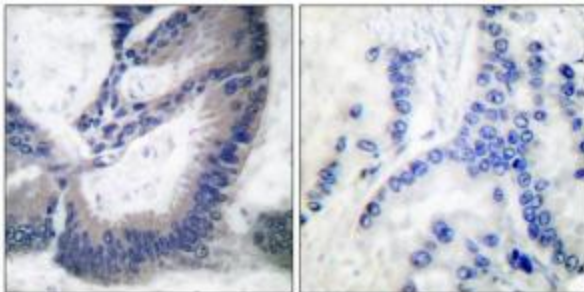
Product images:



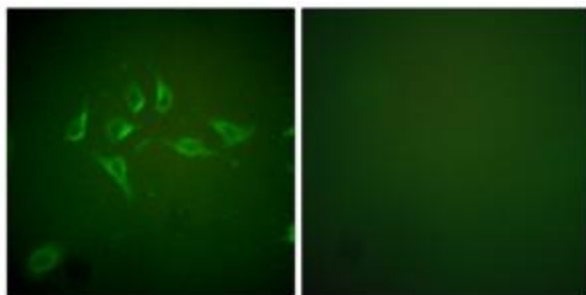
Western blot analysis of extracts from NIH/3T3 cells, using iNOS antibody (#TA314265).The lane on the right is treated with the synthesized peptide.



Western blot analysis of extracts from JK cells (Lane 2), using iNOS Antibody. The lane on the left is treated with synthesized peptide.



Immunohistochemical analysis of paraffin-embedded human lung carcinoma tissue using iNOS antibody (#TA314265).The picture on the right is treated with the synthesized peptide.



Immunofluorescence analysis of HepG2 cells, using iNOS antibody (#TA314265). The picture on the right is treated with the synthesized peptide.