

Product datasheet for **TA314264**

NMBR Rabbit Polyclonal Antibody

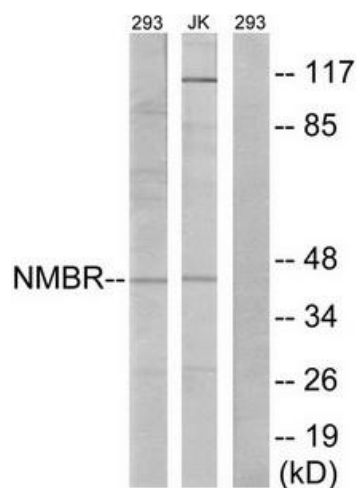
Product data:

Product Type:	Primary Antibodies
Applications:	IF, WB
Recommended Dilution:	WB: 1:500~1:3000, IF: 1:100~1:500, ELISA: 1:1000
Reactivity:	Human, Mouse, Rat
Host:	Rabbit
Isotype:	IgG
Clonality:	Polyclonal
Immunogen:	The antiserum was produced against synthesized peptide derived from internal of human NMBR.
Formulation:	Phosphate buffered saline (without Mg ²⁺ and Ca ²⁺), pH 7.4, 150mM NaCl, 0.02% sodium azide and 50% glycerol.
Concentration:	lot specific
Purification:	The antibody was affinity-purified from rabbit antiserum by affinity-chromatography using epitope-specific immunogen.
Conjugation:	Unconjugated
Storage:	Store at -20°C as received.
Stability:	Stable for 12 months from date of receipt.
Gene Name:	neuromedin B receptor
Database Link:	NP_002502 Entrez Gene 18101 Mouse Entrez Gene 25264 Rat Entrez Gene 4829 Human P28336
Synonyms:	BB1; BB1R; NMB-R
Note:	NMBR antibody detects endogenous levels of total NMBR protein.
Protein Families:	Druggable Genome, GPCR, Transmembrane
Protein Pathways:	Neuroactive ligand-receptor interaction

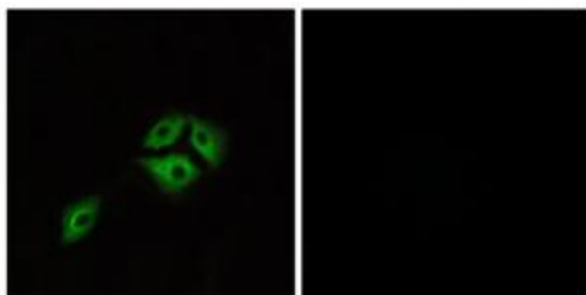


[View online »](#)

Product images:



Western blot analysis of extracts from 293 cells and Jurkat cells, using NMBR antibody. The lane on the right is treated with the synthesized peptide.



Immunofluorescence analysis of A549 cells, using NMBR antibody. The picture on the right is treated with the synthesized peptide.