

Product datasheet for **TA314263**

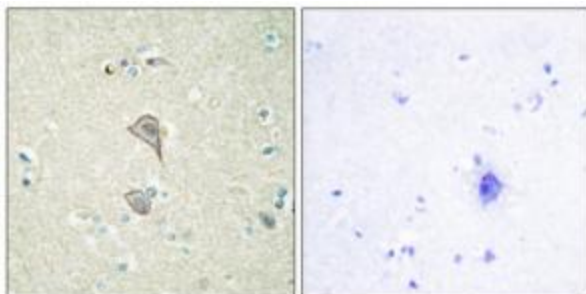
NK TR protein (NKTR) Rabbit Polyclonal Antibody

Product data:

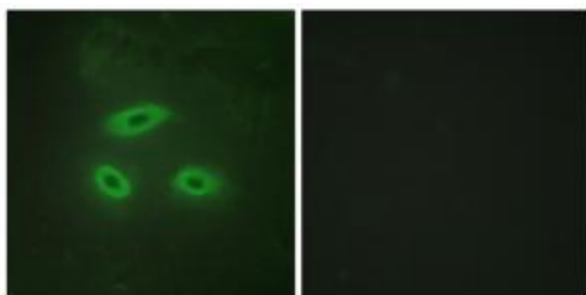
Product Type:	Primary Antibodies
Applications:	IF, IHC
Recommended Dilution:	IHC: 1:50~1:100, IF: 1:100~1:500, ELISA: 1:5000
Reactivity:	Human
Host:	Rabbit
Isotype:	IgG
Clonality:	Polyclonal
Immunogen:	The antiserum was produced against synthesized peptide derived from internal of human NKTR.
Formulation:	Phosphate buffered saline (without Mg ²⁺ and Ca ²⁺), pH 7.4, 150mM NaCl, 0.02% sodium azide and 50% glycerol.
Concentration:	lot specific
Purification:	The antibody was affinity-purified from rabbit antiserum by affinity-chromatography using epitope-specific immunogen.
Conjugation:	Unconjugated
Storage:	Store at -20°C as received.
Stability:	Stable for 12 months from date of receipt.
Gene Name:	natural killer cell triggering receptor
Database Link:	NP_005376 Entrez Gene 4820 Human P30414
Synonyms:	p104
Note:	NKTR antibody detects endogenous levels of total NKTR protein.
Protein Families:	Druggable Genome



[View online »](#)

Product images:

Immunohistochemistry analysis of paraffin-embedded human brain tissue, using NKTR antibody. The picture on the right is treated with the synthesized peptide.



Immunofluorescence analysis of HeLa cells, using NKTR antibody. The picture on the right is treated with the synthesized peptide.