

Product datasheet for **TA314260**

NFYC Rabbit Polyclonal Antibody

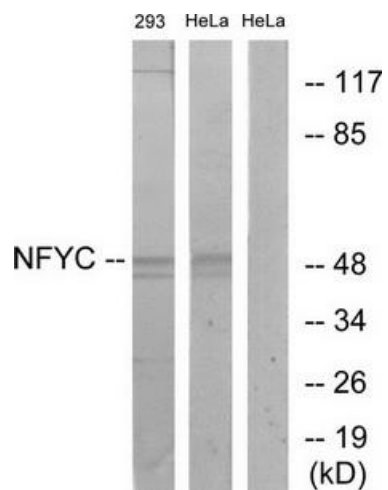
Product data:

Product Type:	Primary Antibodies
Applications:	WB
Recommended Dilution:	WB: 1:500~1:3000, ELISA: 1:1000
Reactivity:	Human, Mouse, Rat
Host:	Rabbit
Isotype:	IgG
Clonality:	Polyclonal
Immunogen:	The antiserum was produced against synthesized peptide derived from N-terminal of human NFYC
Formulation:	Phosphate buffered saline (without Mg ²⁺ and Ca ²⁺), pH 7.4, 150mM NaCl, 0.02% sodium azide and 50% glycerol.
Concentration:	lot specific
Purification:	The antibody was affinity-purified from rabbit antiserum by affinity-chromatography using epitope-specific immunogen.
Conjugation:	Unconjugated
Storage:	Store at -20°C as received.
Stability:	Stable for 12 months from date of receipt.
Gene Name:	nuclear transcription factor Y subunit gamma
Database Link:	NP_001136059 Entrez Gene 18046 Mouse Entrez Gene 25337 Rat Entrez Gene 4802 Human Q13952
Synonyms:	CBF-C; CBFC; H1TF2A; HAP5; HSM; NF-YC
Note:	NFYC antibody detects endogenous levels of total NFYC protein.
Protein Families:	Transcription Factors
Protein Pathways:	Antigen processing and presentation



[View online »](#)

Product images:



Western blot analysis of extracts from 293 cells and HeLa cells, using NFYC antibody. The lane on the right is treated with the synthesized peptide.