

Product datasheet for **TA314256**

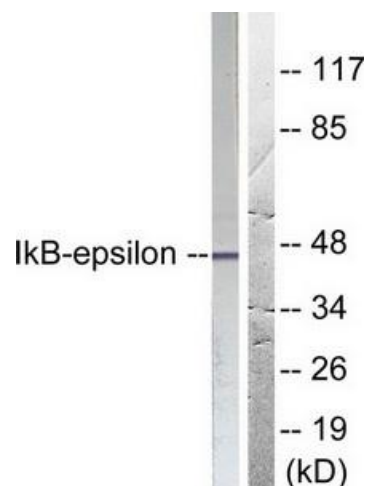
IKB epsilon (NFKBIE) Rabbit Polyclonal Antibody

Product data:

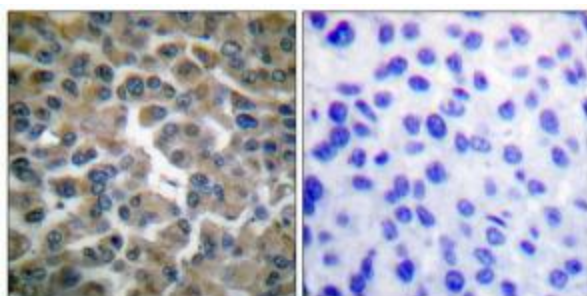
Product Type:	Primary Antibodies
Applications:	IF, IHC, WB
Recommended Dilution:	WB: 1:500~1000, IHC: 1:50~100, IF: 1:100~1:500, ELISA: 1:40000
Reactivity:	Human, Mouse, Rat
Host:	Rabbit
Isotype:	IgG
Clonality:	Polyclonal
Immunogen:	The antiserum was produced against synthesized non-phosphopeptide derived from human I β B-e around the phosphorylation site of serine 22 (I-E-SP-L-R).
Formulation:	Phosphate buffered saline (without Mg ²⁺ and Ca ²⁺), pH 7.4, 150mM NaCl, 0.02% sodium azide and 50% glycerol.
Concentration:	lot specific
Purification:	The antibody was affinity-purified from rabbit antiserum by affinity-chromatography using epitope-specific immunogen.
Conjugation:	Unconjugated
Storage:	Store at -20°C as received.
Stability:	Stable for 12 months from date of receipt.
Gene Name:	NFKB inhibitor epsilon
Database Link:	NP_004547 Entrez Gene 18037 MouseEntrez Gene 316241 RatEntrez Gene 4794 Human O00221
Synonyms:	IKBE
Note:	I.B-. (Ab-22) antibody detects endogenous levels of total I.B-. protein.
Protein Families:	Druggable Genome, Transcription Factors
Protein Pathways:	Adipocytokine signaling pathway, B cell receptor signaling pathway, Neurotrophin signaling pathway, T cell receptor signaling pathway



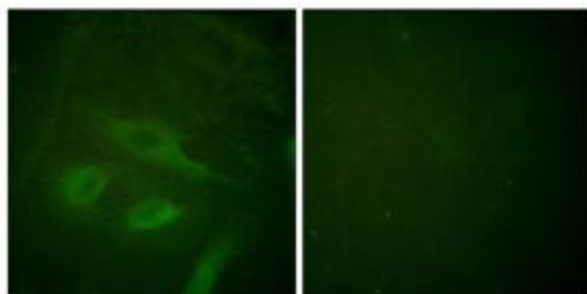
[View online »](#)

Product images:


Western blot analysis of extracts from HeLa cells treated with TNF- α (20ng/ml 5min), using I κ B-e (Ab-22) antibody (#TA314256, Line 1 and 2).The lane on the right is treated with the synthesized peptide.



Immunohistochemical analysis of paraffin-embedded human breast carcinoma tissue using I κ B-e (Ab-22) antibody (#TA314256).The picture on the right is treated with the synthesized peptide.



Immunofluorescence analysis of HeLa cells, using I κ B-e (Ab-22) antibody (#TA314256).The picture on the right is treated with the synthesized peptide.