

Product datasheet for **TA314252**

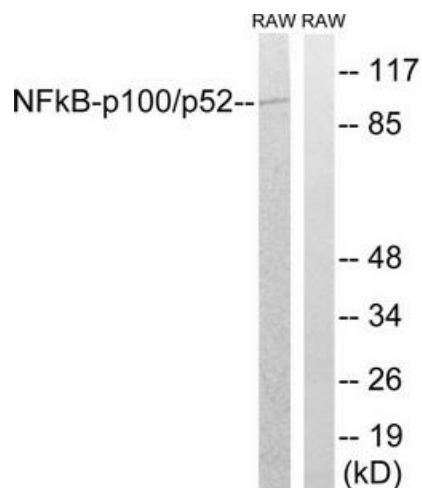
NFkB p100 / p52 Rabbit Polyclonal Antibody

Product data:

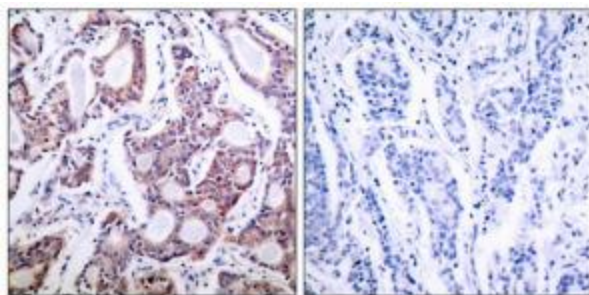
Product Type:	Primary Antibodies
Applications:	IHC, WB
Recommended Dilution:	WB: 1:500~1:3000, IHC: 1:50~1:100, ELISA: 1:10000
Reactivity:	Human, Mouse, Rat
Host:	Rabbit
Isotype:	IgG
Clonality:	Polyclonal
Immunogen:	This antiserum was produced against synthesized non-phosphopeptide derived from human NF- κ B p100/p52 around the phosphorylation site of serine 869.
Formulation:	Phosphate buffered saline (without Mg ²⁺ and Ca ²⁺), pH 7.4, 150mM NaCl, 0.02% sodium azide and 50% glycerol.
Concentration:	lot specific
Purification:	The antibody was affinity-purified from rabbit antiserum by affinity-chromatography using epitope-specific immunogen.
Conjugation:	Unconjugated
Storage:	Store at -20°C as received.
Stability:	Stable for 12 months from date of receipt.
Database Link:	NP_001070961 Entrez Gene 18034 Mouse Entrez Gene 309452 Rat
Synonyms:	LYT-10; LYT10; p52
Note:	NF-.B p100/p52 (Ab-869) antibody detects endogenous levels of total NF-.B p100/p52 protein.
Protein Families:	Transcription Factors
Protein Pathways:	MAPK signaling pathway, Pathways in cancer



[View online »](#)

Product images:

Western blot analysis of extracts from RAW264.7 cells, using NF-kappaB p100/p52 (Ab-869) Antibody. The lane on the right is treated with the synthesized peptide.



Immunohistochemistry analysis of paraffin-embedded human breast carcinoma tissue, using NF-kappaB p100/p52 (Ab-869) Antibody. The picture on the right is treated with the synthesized peptide.