

Product datasheet for **TA314248**

Nuclear Factor 1 (NFIA) Rabbit Polyclonal Antibody

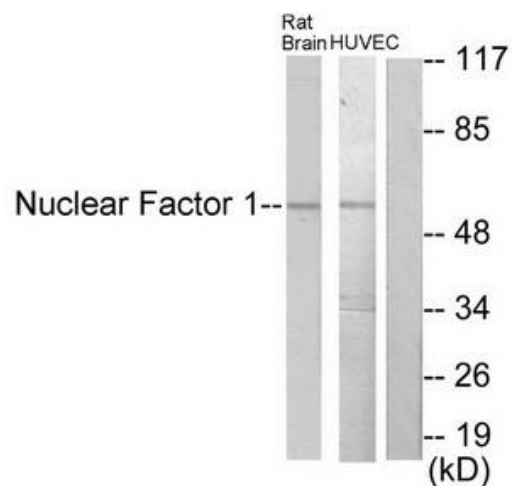
Product data:

Product Type:	Primary Antibodies
Applications:	WB
Recommended Dilution:	WB: 1:500~1:3000, ELISA: 1:20000
Reactivity:	Human, Mouse, Rat
Host:	Rabbit
Isotype:	IgG
Clonality:	Polyclonal
Immunogen:	The antiserum was produced against synthesized peptide derived from internal of human Nuclear Factor 1.
Formulation:	Phosphate buffered saline (without Mg ²⁺ and Ca ²⁺), pH 7.4, 150mM NaCl, 0.02% sodium azide and 50% glycerol.
Concentration:	lot specific
Purification:	The antibody was affinity-purified from rabbit antiserum by affinity-chromatography using epitope-specific immunogen.
Conjugation:	Unconjugated
Storage:	Store at -20°C as received.
Stability:	Stable for 12 months from date of receipt.
Gene Name:	nuclear factor I A
Database Link:	NP_001128145 Entrez Gene 18027 Mouse Entrez Gene 25492 Rat Entrez Gene 4774 Human Q12857
Synonyms:	A; CTF; NF-I; NF1-A; NFI-A; NFI-L
Note:	Nuclear Factor 1 antibody detects endogenous levels of total Nuclear Factor 1 protein.
Protein Families:	Transcription Factors



[View online »](#)

Product images:



Western blot analysis of extracts from rat brain cells and HUVEC cells, using Nuclear Factor 1 antibody. The lane on the right is treated with the synthesized peptide.