

Product datasheet for **TA314247**

Neurofibromin (NF1) Rabbit Polyclonal Antibody

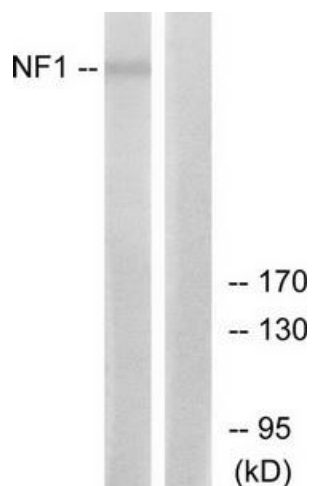
Product data:

Product Type:	Primary Antibodies
Applications:	IF, WB
Recommended Dilution:	WB: 1:500~1:3000, IF: 1:100~1:500, ELISA: 1:20000
Reactivity:	Human, Mouse, Rat
Host:	Rabbit
Isotype:	IgG
Clonality:	Polyclonal
Immunogen:	The antiserum was produced against synthesized peptide derived from internal of human NF1.
Formulation:	Phosphate buffered saline (without Mg ²⁺ and Ca ²⁺), pH 7.4, 150mM NaCl, 0.02% sodium azide and 50% glycerol.
Concentration:	lot specific
Purification:	The antibody was affinity-purified from rabbit antiserum by affinity-chromatography using epitope-specific immunogen.
Conjugation:	Unconjugated
Storage:	Store at -20°C as received.
Stability:	Stable for 12 months from date of receipt.
Gene Name:	neurofibromin 1
Database Link:	NP_000258 Entrez Gene 18015 Mouse Entrez Gene 24592 Rat Entrez Gene 4763 Human P21359
Synonyms:	NFNS; VRNF; WSS
Note:	NF1 antibody detects endogenous levels of total NF1 protein.
Protein Families:	Druggable Genome
Protein Pathways:	MAPK signaling pathway

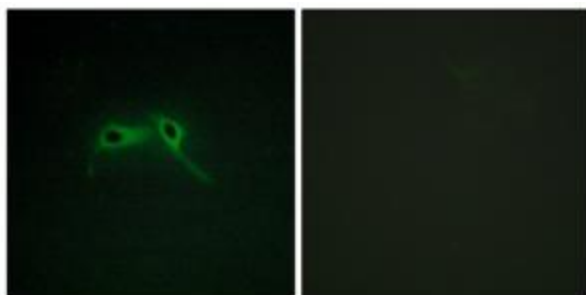


[View online »](#)

Product images:



Western blot analysis of extracts from HepG2 cells, using NF1 antibody. The lane on the right is treated with the synthesized peptide.



Immunofluorescence analysis of HepG2 cells, using NF1 antibody. The picture on the right is treated with the synthesized peptide.