

## Product datasheet for **TA314245**

### **NEDD8 Rabbit Polyclonal Antibody**

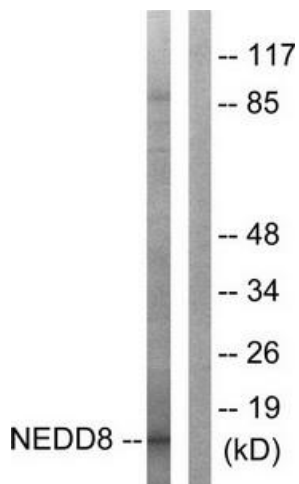
#### **Product data:**

<b>Product Type:</b>	Primary Antibodies
<b>Applications:</b>	IHC, WB
<b>Recommended Dilution:</b>	WB: 1:500~1:3000, IHC: 1:50~1:100, ELISA: 1:5000
<b>Reactivity:</b>	Human
<b>Host:</b>	Rabbit
<b>Isotype:</b>	IgG
<b>Clonality:</b>	Polyclonal
<b>Immunogen:</b>	The antiserum was produced against synthesized peptide derived from Internal of human NEDD8.
<b>Formulation:</b>	Phosphate buffered saline (without Mg <sup>2+</sup> and Ca <sup>2+</sup> ), pH 7.4, 150mM NaCl, 0.02% sodium azide and 50% glycerol.
<b>Concentration:</b>	lot specific
<b>Purification:</b>	The antibody was affinity-purified from rabbit antiserum by affinity-chromatography using epitope-specific immunogen.
<b>Conjugation:</b>	Unconjugated
<b>Storage:</b>	Store at -20°C as received.
<b>Stability:</b>	Stable for 12 months from date of receipt.
<b>Gene Name:</b>	neural precursor cell expressed, developmentally down-regulated 8
<b>Database Link:</b>	<a href="#">NP_006147</a> <a href="#">Entrez Gene 4738 Human</a> <a href="#">Q15843</a>
<b>Synonyms:</b>	NEDD-8
<b>Note:</b>	NEDD8 antibody detects endogenous levels of total NEDD8 protein.
<b>Protein Families:</b>	Druggable Genome

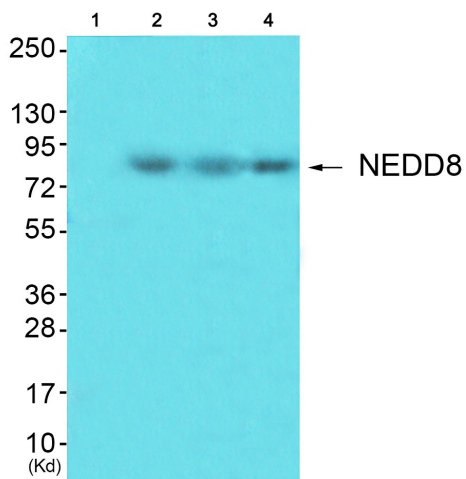


[View online »](#)

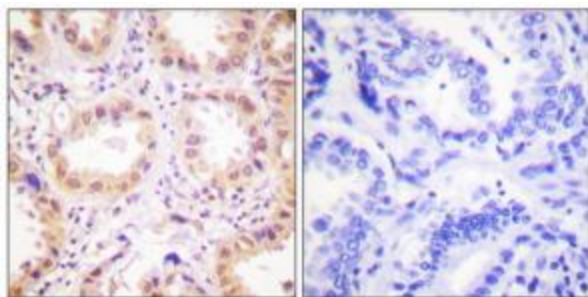
Product images:



Western blot analysis of extracts from Jurkat cells, using NEDD8 antibody. The lane on the right is treated with the synthesized peptide.



Western blot analysis of extracts from HuvEc cells (Lane 2), JK cells (Lane 3) and cos-7 cells (Lane 4), using NEDD8 Antibody. The lane on the left is treated with synthesized peptide.



Immunohistochemistry analysis of paraffin-embedded human lung carcinoma tissue using NEDD8 antibody. The picture on the right is treated with the synthesized peptide.