

Product datasheet for **TA314243**

Septin 2 (SEPT2) Rabbit Polyclonal Antibody

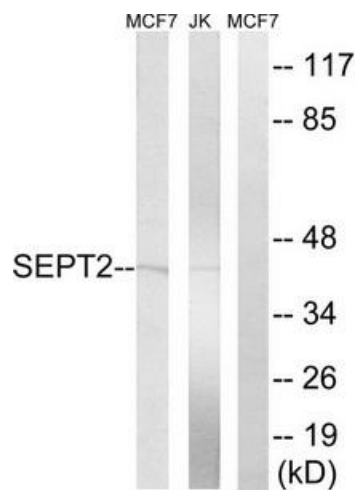
Product data:

Product Type:	Primary Antibodies
Applications:	WB
Recommended Dilution:	WB: 1:500~1:3000, ELISA: 1:20000
Reactivity:	Human, Mouse, Rat
Host:	Rabbit
Isotype:	IgG
Clonality:	Polyclonal
Immunogen:	The antiserum was produced against synthesized peptide derived from internal of human SEPT2.
Formulation:	Phosphate buffered saline (without Mg ²⁺ and Ca ²⁺), pH 7.4, 150mM NaCl, 0.02% sodium azide and 50% glycerol.
Concentration:	lot specific
Purification:	The antibody was affinity-purified from rabbit antiserum by affinity-chromatography using epitope-specific immunogen.
Conjugation:	Unconjugated
Storage:	Store at -20°C as received.
Stability:	Stable for 12 months from date of receipt.
Gene Name:	septin 2
Database Link:	NP_001008491 Entrez Gene 18000 Mouse Entrez Gene 117515 Rat Entrez Gene 4735 Human Q15019
Synonyms:	DIFF6; hNedd5; NEDD-5; NEDD5; Pnut13
Note:	SEPT2 antibody detects endogenous levels of total SEPT2 protein.



[View online »](#)

Product images:



Western blot analysis of extracts from Jurkat cells and MCF-7 cells, using SEPT2 antibody. The lane on the right is treated with the synthesized peptide.