

Product datasheet for **TA314239**

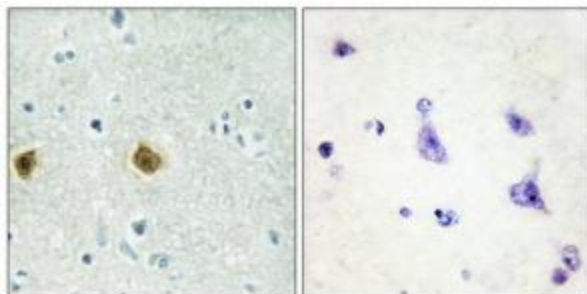
NDUFC2 Rabbit Polyclonal Antibody

Product data:

Product Type:	Primary Antibodies
Applications:	IHC
Recommended Dilution:	IHC: 1:50~1:100, ELISA: 1:10000
Reactivity:	Human, Rat
Host:	Rabbit
Isotype:	IgG
Clonality:	Polyclonal
Immunogen:	The antiserum was produced against synthesized peptide derived from internal of human NDUC2.
Formulation:	Phosphate buffered saline (without Mg ²⁺ and Ca ²⁺), pH 7.4, 150mM NaCl, 0.02% sodium azide and 50% glycerol.
Concentration:	lot specific
Purification:	The antibody was affinity-purified from rabbit antiserum by affinity-chromatography using epitope-specific immunogen.
Conjugation:	Unconjugated
Storage:	Store at -20°C as received.
Stability:	Stable for 12 months from date of receipt.
Gene Name:	NADH:ubiquinone oxidoreductase subunit C2
Database Link:	NP_004540 Entrez Gene 293130 Rat Entrez Gene 4718 Human O95298
Synonyms:	B14.5b; CI-B14.5b; HLC-1; NADHDH2
Note:	NDUC2 antibody detects endogenous levels of total NDUC2 protein.
Protein Families:	Transmembrane
Protein Pathways:	Alzheimer's disease, Huntington's disease, Metabolic pathways, Oxidative phosphorylation, Parkinson's disease



[View online »](#)

Product images:

Immunohistochemistry analysis of paraffin-embedded human brain tissue, using NDUFC2 antibody. The picture on the right is treated with the synthesized peptide.