

Product datasheet for **TA314237**

NDUFA9 Rabbit Polyclonal Antibody

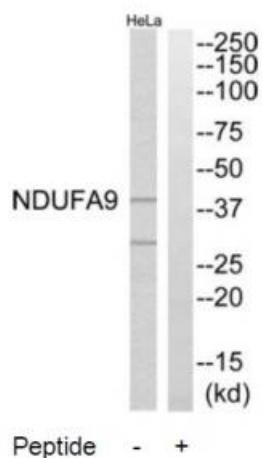
Product data:

Product Type:	Primary Antibodies
Applications:	WB
Recommended Dilution:	WB: 1:500~1:3000, ELISA: 1:10000
Reactivity:	Human, Mouse, Rat
Host:	Rabbit
Isotype:	IgG
Clonality:	Polyclonal
Immunogen:	The antiserum was produced against synthesized peptide derived from internal of human NDUFA9.
Formulation:	Phosphate buffered saline (without Mg ²⁺ and Ca ²⁺), pH 7.4, 150mM NaCl, 0.02% sodium azide and 50% glycerol.
Concentration:	lot specific
Purification:	The antibody was affinity-purified from rabbit antiserum by affinity-chromatography using epitope-specific immunogen.
Conjugation:	Unconjugated
Storage:	Store at -20°C as received.
Stability:	Stable for 12 months from date of receipt.
Gene Name:	NADH:ubiquinone oxidoreductase subunit A9
Database Link:	NP_004993 Entrez Gene 66108 MouseEntrez Gene 362440 RatEntrez Gene 4704 Human Q16795
Synonyms:	CC6; CI-39k; CI39k; NDUFS2L; SDR22E1
Note:	NDUFA9 antibody detects endogenous levels of total NDUFA9 protein.
Protein Pathways:	Alzheimer's disease, Huntington's disease, Metabolic pathways, Oxidative phosphorylation, Parkinson's disease



[View online »](#)

Product images:



Western blot analysis of extracts from HeLa cells, using NDUFA9 antibody. The lane on the right is treated with the synthesized peptide.