

Product datasheet for **TA314236**

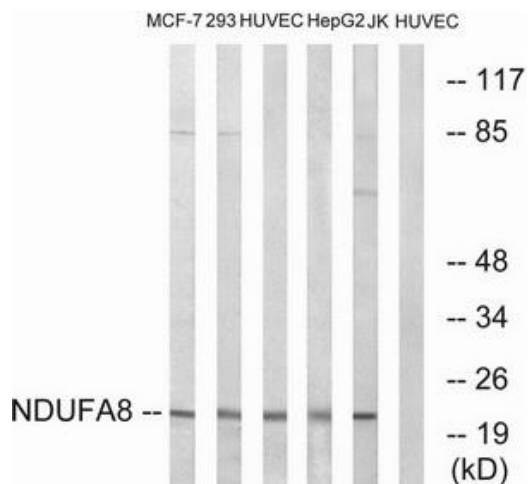
NDUFA8 Rabbit Polyclonal Antibody

Product data:

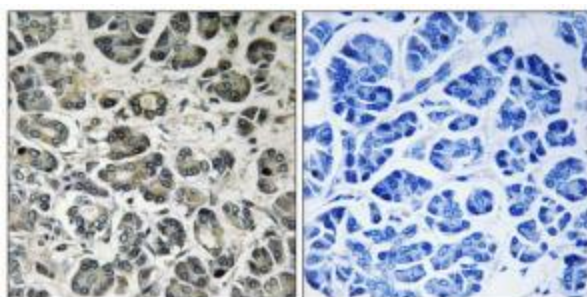
| | |
|-----------------------|---|
| Product Type: | Primary Antibodies |
| Applications: | IHC, WB |
| Recommended Dilution: | WB: 1:500~1:3000, IHC: 1:50~1:100, ELISA: 1:40000 |
| Reactivity: | Human, Mouse |
| Host: | Rabbit |
| Isotype: | IgG |
| Clonality: | Polyclonal |
| Immunogen: | The antiserum was produced against synthesized peptide derived from internal of human NDUFA8. |
| Formulation: | Phosphate buffered saline (without Mg ²⁺ and Ca ²⁺), pH 7.4, 150mM NaCl, 0.02% sodium azide and 50% glycerol. |
| Concentration: | lot specific |
| Purification: | The antibody was affinity-purified from rabbit antiserum by affinity-chromatography using epitope-specific immunogen. |
| Conjugation: | Unconjugated |
| Storage: | Store at -20°C as received. |
| Stability: | Stable for 12 months from date of receipt. |
| Gene Name: | NADH:ubiquinone oxidoreductase subunit A8 |
| Database Link: | NP_055037 Entrez Gene 68375 Mouse Entrez Gene 4702 Human P51970 |
| Synonyms: | CI-19KD; CI-PGIV; PGIV |
| Note: | NDUFA8 antibody detects endogenous levels of total NDUFA8 protein. |
| Protein Pathways: | Alzheimer's disease, Huntington's disease, Metabolic pathways, Oxidative phosphorylation, Parkinson's disease |



[View online »](#)

Product images:

Western blot analysis of extracts from MCF-7 cells, 293 cells, HUVEC cells, HepG2 cells and Jurkat cells, using NDUFA8 antibody. The lane on the right is treated with the synthesized peptide.



Immunohistochemistry analysis of paraffin-embedded human pancreas tissue using NDUFA8 antibody. The picture on the right is treated with the synthesized peptide.