

Product datasheet for **TA314232**

NCAM2 Rabbit Polyclonal Antibody

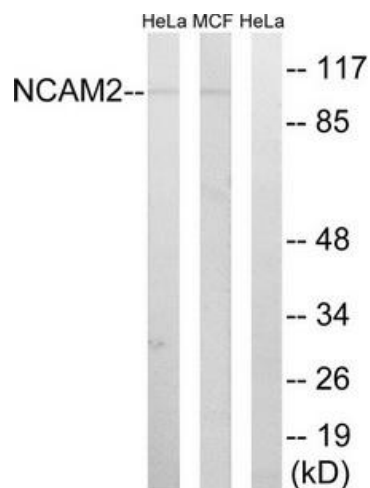
Product data:

Product Type:	Primary Antibodies
Applications:	WB
Recommended Dilution:	WB: 1:500~1:3000, ELISA: 1:40000
Reactivity:	Human, Mouse, Rat
Host:	Rabbit
Isotype:	IgG
Clonality:	Polyclonal
Immunogen:	The antiserum was produced against synthesized peptide derived from internal of human NCAM2.
Formulation:	Phosphate buffered saline (without Mg ²⁺ and Ca ²⁺), pH 7.4, 150mM NaCl, 0.02% sodium azide and 50% glycerol.
Concentration:	lot specific
Purification:	The antibody was affinity-purified from rabbit antiserum by affinity-chromatography using epitope-specific immunogen.
Conjugation:	Unconjugated
Storage:	Store at -20°C as received.
Stability:	Stable for 12 months from date of receipt.
Gene Name:	neural cell adhesion molecule 2
Database Link:	NP_004531 Entrez Gene 17968 MouseEntrez Gene 288280 RatEntrez Gene 4685 Human O15394
Synonyms:	NCAM21
Note:	NCAM2 antibody detects endogenous levels of total NCAM2 protein.
Protein Families:	Transmembrane
Protein Pathways:	Cell adhesion molecules (CAMs), Prion diseases

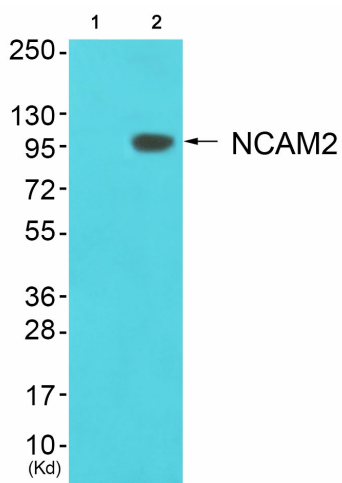


[View online »](#)

Product images:



Western blot analysis of extracts from MCF-7 cells and HeLa cells, using NCAM2 antibody. The lane on the right is treated with the synthesized peptide.



Western blot analysis of extracts from cos-7 cells (Lane 2), using NCAM2 Antibody. The lane on the left is treated with synthesized peptide.