

## Product datasheet for **TA314231**

### NAB2 Rabbit Polyclonal Antibody

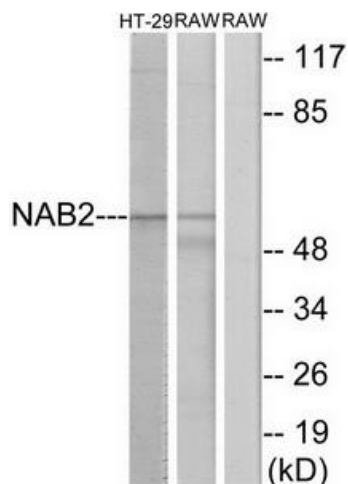
#### Product data:

|                       |   |
|-----------------------|---|
| Product Type:         | Primary Antibodies  |
| Applications:         | IHC, WB   |
| Recommended Dilution: | WB: 1:500~1:3000, IHC: 1:50~1:100, ELISA: 1:10000   |
| Reactivity:           | Human, Mouse  |
| Host:                 | Rabbit  |
| Isotype:              | IgG   |
| Clonality:            | Polyclonal  |
| Immunogen:            | The antiserum was produced against synthesized peptide derived from internal of human NAB2.   |
| Formulation:          | Phosphate buffered saline (without Mg <sup>2+</sup> and Ca <sup>2+</sup> ), pH 7.4, 150mM NaCl, 0.02% sodium azide and 50% glycerol.  |
| Concentration:        | lot specific  |
| Purification:         | The antibody was affinity-purified from rabbit antiserum by affinity-chromatography using epitope-specific immunogen.                 |
| Conjugation:          | Unconjugated  |
| Storage:              | Store at -20°C as received.   |
| Stability:            | Stable for 12 months from date of receipt.  |
| Gene Name:            | NGFI-A binding protein 2  |
| Database Link:        | <a href="#">NP_005958</a><br><a href="#">Entrez Gene 17937 Mouse</a> <a href="#">Entrez Gene 4665 Human</a><br><a href="#">Q15742</a> |
| Synonyms:             | MADER   |
| Note:                 | NAB2 antibody detects endogenous levels of total NAB2 protein.  |
| Protein Families:     | Transcription Factors   |

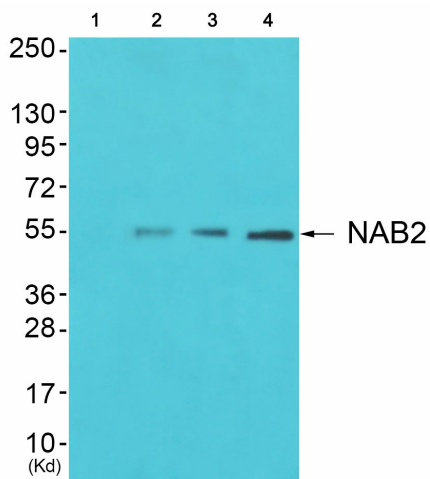


[View online »](#)

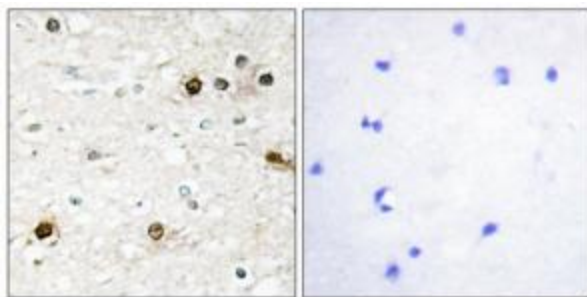
Product images:



Western blot analysis of extracts from HT-29 cells and RAW264.7 cells, using NAB2 antibody. The lane on the right is treated with the synthesized peptide.



Western blot analysis of extracts from 3T3 cells (Lane 2), colo cells (Lane 3) and K562 cells (Lane 4), using NAB2 Antibody. The lane on the left is treated with synthesized peptide.



Immunohistochemistry analysis of paraffin-embedded human brain tissue using NAB2 antibody. The picture on the right is treated with the synthesized peptide.