

Product datasheet for **TA314225**

MYF6 Rabbit Polyclonal Antibody

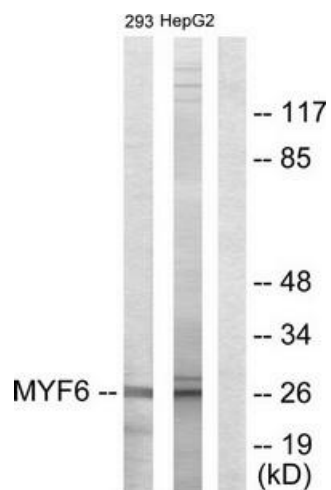
Product data:

Product Type:	Primary Antibodies
Applications:	WB
Recommended Dilution:	WB: 1:500~1:3000, ELISA: 1:20000
Reactivity:	Human, Mouse, Rat
Host:	Rabbit
Isotype:	IgG
Clonality:	Polyclonal
Immunogen:	The antiserum was produced against synthesized peptide derived from internal of human MYF6.
Formulation:	Phosphate buffered saline (without Mg ²⁺ and Ca ²⁺), pH 7.4, 150mM NaCl, 0.02% sodium azide and 50% glycerol.
Concentration:	lot specific
Purification:	The antibody was affinity-purified from rabbit antiserum by affinity-chromatography using epitope-specific immunogen.
Conjugation:	Unconjugated
Storage:	Store at -20°C as received.
Stability:	Stable for 12 months from date of receipt.
Gene Name:	myogenic factor 6
Database Link:	NP_002460 Entrez Gene 17878 Mouse Entrez Gene 25714 Rat Entrez Gene 4618 Human P23409
Synonyms:	bHLHc4; CNM3; MRF4; myf-6
Note:	MYF6 antibody detects endogenous levels of total MYF6 protein.
Protein Families:	Druggable Genome, Transcription Factors



[View online »](#)

Product images:



Western blot analysis of extracts from 293 cells and HepG2 cells, using MYF6 antibody. The lane on the right is treated with the synthesized peptide.