

## Product datasheet for **TA314220**

### MYH (MUTYH) Rabbit Polyclonal Antibody

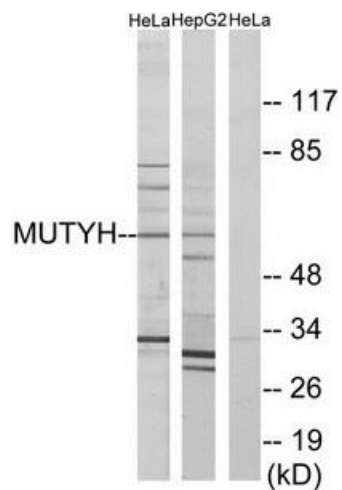
#### Product data:

Product Type:	Primary Antibodies
Applications:	IF, WB
Recommended Dilution:	WB: 1:500~1:3000, IF: 1:100~1:500, ELISA: 1:10000
Reactivity:	Human, Mouse, Rat
Host:	Rabbit
Isotype:	IgG
Clonality:	Polyclonal
Immunogen:	The antiserum was produced against synthesized peptide derived from internal of human MUTYH.
Formulation:	Phosphate buffered saline (without Mg <sup>2+</sup> and Ca <sup>2+</sup> ), pH 7.4, 150mM NaCl, 0.02% sodium azide and 50% glycerol.
Concentration:	lot specific
Purification:	The antibody was affinity-purified from rabbit antiserum by affinity-chromatography using epitope-specific immunogen.
Conjugation:	Unconjugated
Storage:	Store at -20°C as received.
Stability:	Stable for 12 months from date of receipt.
Gene Name:	mutY DNA glycosylase
Database Link:	<a href="#">NP_001041636</a> <a href="#">Entrez Gene 70603 MouseEntrez Gene 170841 RatEntrez Gene 4595 Human Q9UIF7</a>
Synonyms:	MYH
Note:	MUTYH antibody detects endogenous levels of total MUTYH protein.
Protein Families:	Druggable Genome, Stem cell - Pluripotency
Protein Pathways:	Base excision repair

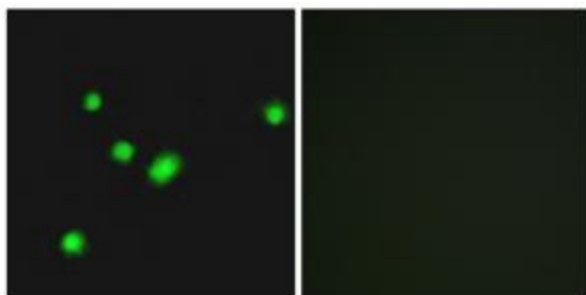


[View online »](#)

## Product images:



Western blot analysis of extracts from HeLa cells and HepG2 cells, using MUTYH antibody. The lane on the right is treated with the synthesized peptide.



Immunofluorescence analysis of A549 cells, using MUTYH antibody. The picture on the right is treated with the synthesized peptide.