

## Product datasheet for **TA314217**

### Melatonin Receptor 1B (MTNR1B) Rabbit Polyclonal Antibody

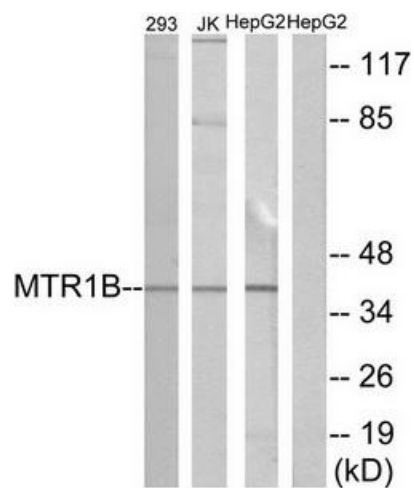
#### Product data:

Product Type:	Primary Antibodies
Applications:	WB
Recommended Dilution:	WB: 1:500~1:3000, ELISA: 1:1000
Reactivity:	Human
Host:	Rabbit
Isotype:	IgG
Clonality:	Polyclonal
Immunogen:	The antiserum was produced against synthesized peptide derived from internal of human MTR1B.
Formulation:	Phosphate buffered saline (without Mg <sup>2+</sup> and Ca <sup>2+</sup> ), pH 7.4, 150mM NaCl, 0.02% sodium azide and 50% glycerol.
Concentration:	lot specific
Purification:	The antibody was affinity-purified from rabbit antiserum by affinity-chromatography using epitope-specific immunogen.
Conjugation:	Unconjugated
Storage:	Store at -20°C as received.
Stability:	Stable for 12 months from date of receipt.
Gene Name:	melatonin receptor 1B
Database Link:	<a href="#">NP_005950</a> <a href="#">Entrez Gene 4544 Human P49286</a>
Synonyms:	FGQTL2; MEL-1B-R; MT2
Note:	MTR1B antibody detects endogenous levels of total MTR1B protein.
Protein Families:	Druggable Genome, Transmembrane
Protein Pathways:	Neuroactive ligand-receptor interaction



[View online »](#)

## Product images:



Western blot analysis of extracts from 293 cells, Jurkat cells and HepG2 cells, using MTR1B antibody. The lane on the right is treated with the synthesized peptide.