

## Product datasheet for **TA314212**

### MOS Rabbit Polyclonal Antibody

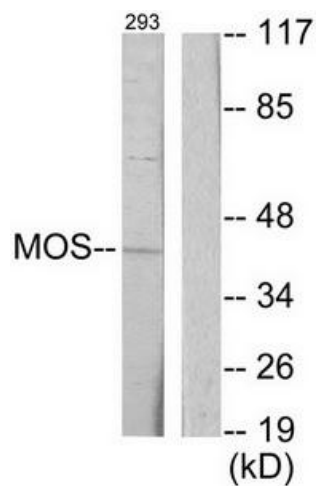
#### Product data:

Product Type:	Primary Antibodies
Applications:	WB
Recommended Dilution:	WB: 1:500~1:3000, IELISA: 1:5000
Reactivity:	Human
Host:	Rabbit
Isotype:	IgG
Clonality:	Polyclonal
Immunogen:	The antiserum was produced against synthesized peptide derived from internal of human MOS.
Formulation:	Phosphate buffered saline (without Mg <sup>2+</sup> and Ca <sup>2+</sup> ), pH 7.4, 150mM NaCl, 0.02% sodium azide and 50% glycerol.
Concentration:	lot specific
Purification:	The antibody was affinity-purified from rabbit antiserum by affinity-chromatography using epitope-specific immunogen.
Conjugation:	Unconjugated
Storage:	Store at -20°C as received.
Stability:	Stable for 12 months from date of receipt.
Gene Name:	v-mos Moloney murine sarcoma viral oncogene homolog
Database Link:	<a href="#">NP_005363</a> <a href="#">Entrez Gene 4342 Human</a> <a href="#">P00540</a>
Synonyms:	MSV
Note:	MOS antibody detects endogenous levels of total MOS protein.
Protein Families:	Druggable Genome, Protein Kinase
Protein Pathways:	MAPK signaling pathway, Oocyte meiosis, Progesterone-mediated oocyte maturation, Regulation of actin cytoskeleton



[View online »](#)

## Product images:



Western blot analysis of extracts from 293 cells, using MOS antibody. The lane on the right is treated with the synthesized peptide.