

Product datasheet for **TA314207**

MMP15 Rabbit Polyclonal Antibody

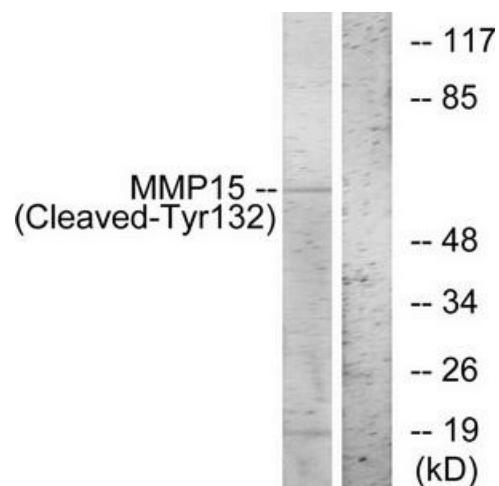
Product data:

Product Type:	Primary Antibodies
Applications:	WB
Recommended Dilution:	WB: 1:500~1:3000, ELISA: 1:10000
Reactivity:	Human
Host:	Rabbit
Isotype:	IgG
Clonality:	Polyclonal
Immunogen:	The antiserum was produced against synthesized peptide derived from human MMP15.
Formulation:	Phosphate buffered saline (without Mg ²⁺ and Ca ²⁺), pH 7.4, 150mM NaCl, 0.02% sodium azide and 50% glycerol.
Concentration:	lot specific
Purification:	The antibody was affinity-purified from rabbit antiserum by affinity-chromatography using epitope-specific immunogen.
Conjugation:	Unconjugated
Storage:	Store at -20°C as received.
Stability:	Stable for 12 months from date of receipt.
Gene Name:	matrix metalloproteinase 15
Database Link:	NP_002419 Entrez Gene 4324 Human P51511
Synonyms:	MT2-MMP; MTMMP2; SMCP-2
Note:	MMP15 (Cleaved-Tyr132) antibody detects endogenous levels of fragment of activated MMP15 resulting from cleavage adjacent to Tyr132.
Protein Families:	Druggable Genome, Protease, Transmembrane



[View online »](#)

Product images:



Western blot analysis of extracts from COS-7 cells, treated with etoposide (25uM, 1 hour), using MMP15 (Cleaved-Tyr132) antibody. The lane on the right is treated with the synthesized peptide.