

Product datasheet for **TA314197**

MITF Rabbit Polyclonal Antibody

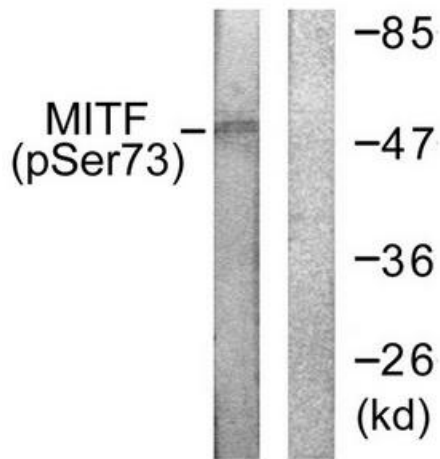
Product data:

Product Type:	Primary Antibodies
Applications:	WB
Recommended Dilution:	WB: 1:500~1:3000, ELISA: 1:1000
Reactivity:	Human, Mouse
Modifications:	Phospho-specific
Host:	Rabbit
Isotype:	IgG
Clonality:	Polyclonal
Immunogen:	The antiserum was produced against synthesized phosphopeptide derived from human MITF around the phosphorylation site of serine 73 (P-N-SP-P-M).
Formulation:	Phosphate buffered saline (without Mg ²⁺ and Ca ²⁺), pH 7.4, 150mM NaCl, 0.02% sodium azide and 50% glycerol.
Concentration:	lot specific
Purification:	The antibody was affinity-purified from rabbit antiserum by affinity-chromatography using epitope-specific immunogen.
Conjugation:	Unconjugated
Storage:	Store at -20°C as received.
Stability:	Stable for 12 months from date of receipt.
Gene Name:	melanogenesis associated transcription factor
Database Link:	NP_937821 Entrez Gene 17342 Mouse Entrez Gene 4286 Human O75030
Synonyms:	bHLHe32; CMM8; MI; WS2; WS2A
Note:	MITF (Phospho-Ser180/73) antibody detects endogenous levels of MITF only when phosphorylated at serine 73.
Protein Families:	Druggable Genome, Transcription Factors
Protein Pathways:	Melanogenesis, Melanoma, Pathways in cancer

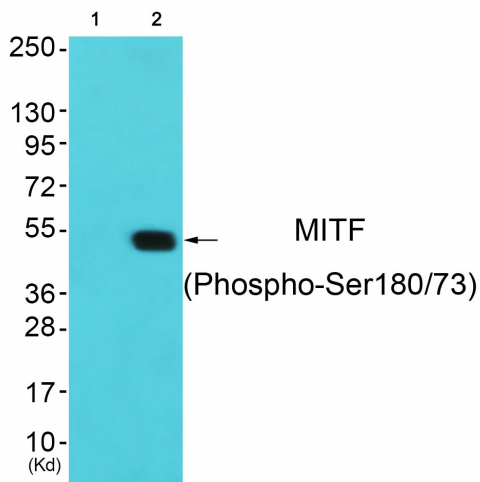


[View online »](#)

Product images:



Western blot analysis of extracts from COS7 cells, using MITF (Phospho-Ser180/73) antibody. The lane on the right is treated with the synthesized peptide.



Western blot analysis of extracts from cos-7 cells (Lane 2), using MITF (Phospho-Ser180/73) Antibody. The lane on the left is treated with synthesized peptide.