

Product datasheet for **TA314196**

MITF Rabbit Polyclonal Antibody

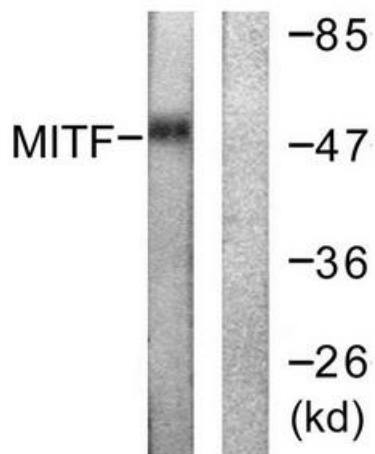
Product data:

Product Type:	Primary Antibodies
Applications:	IF, IHC, WB
Recommended Dilution:	WB: 1:500~1:3000, IHC: 1:50~1:100, IF: 1:100~1:500, ELISA: 1:10000
Reactivity:	Human, Mouse
Host:	Rabbit
Isotype:	IgG
Clonality:	Polyclonal
Immunogen:	The antiserum was produced against synthesized non-phosphopeptide derived from human MITF around the phosphorylation site of serine 180/73 (P-N-SP-P-M).
Formulation:	Phosphate buffered saline (without Mg ²⁺ and Ca ²⁺), pH 7.4, 150mM NaCl, 0.02% sodium azide and 50% glycerol.
Concentration:	lot specific
Purification:	The antibody was affinity-purified from rabbit antiserum by affinity-chromatography using epitope-specific immunogen.
Conjugation:	Unconjugated
Storage:	Store at -20°C as received.
Stability:	Stable for 12 months from date of receipt.
Gene Name:	melanogenesis associated transcription factor
Database Link:	NP_000239 Entrez Gene 17342 Mouse Entrez Gene 4286 Human O75030
Synonyms:	bHLHe32; CMM8; MI; WS2; WS2A
Note:	MITF (Ab-180/73) antibody detects endogenous levels of total MITF protein.
Protein Families:	Druggable Genome, Transcription Factors
Protein Pathways:	Melanogenesis, Melanoma, Pathways in cancer

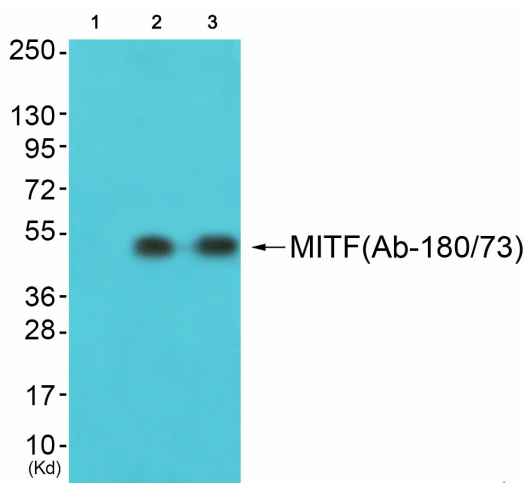


[View online »](#)

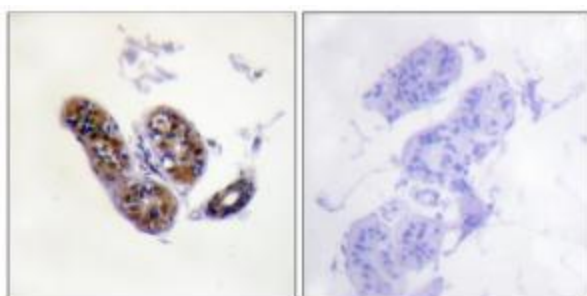
Product images:



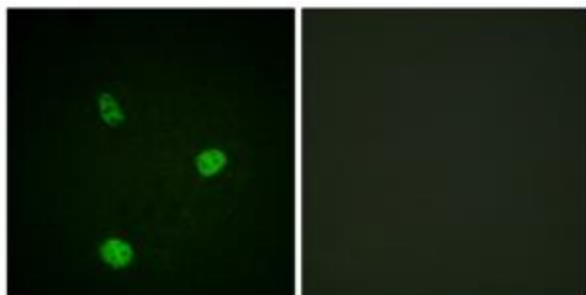
Western blot analysis of extracts from HepG2 cells (lane 1) and COLO205 cells (lane 2), using MITF (Ab-180/73) antibody. The lane on the right is treated with the synthesized peptide.



Western blot analysis of extracts from HepG2 cells (Lane 2) and 3T3 cells (Lane 3), using MITF (Ab-180/73) Antibody. The lane on the left is treated with synthesized peptide.



Immunohistochemistry analysis of paraffin-embedded human skin tissue using MITF (Ab-180/73) antibody. The picture on the right is treated with the synthesized peptide.



Immunofluorescence analysis of HeLa cells, using MITF (Ab-180/73) antibody. The picture on the right is treated with the synthesized peptide.