

Product datasheet for **TA314193**

MGST2 Rabbit Polyclonal Antibody

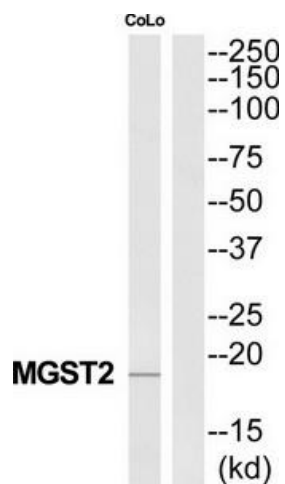
Product data:

Product Type:	Primary Antibodies
Applications:	WB
Recommended Dilution:	WB: 1:500~1:3000, ELISA: 1:10000
Reactivity:	Human
Host:	Rabbit
Isotype:	IgG
Clonality:	Polyclonal
Immunogen:	The antiserum was produced against synthesized peptide derived from Internal of human MGST2.
Formulation:	Phosphate buffered saline (without Mg ²⁺ and Ca ²⁺), pH 7.4, 150mM NaCl, 0.02% sodium azide and 50% glycerol.
Concentration:	lot specific
Purification:	The antibody was affinity-purified from rabbit antiserum by affinity-chromatography using epitope-specific immunogen.
Conjugation:	Unconjugated
Storage:	Store at -20°C as received.
Stability:	Stable for 12 months from date of receipt.
Gene Name:	microsomal glutathione S-transferase 2
Database Link:	NP_002404 Entrez Gene 4258 Human Q99735
Synonyms:	GST2; MGST-II
Note:	MGST2 antibody detects endogenous levels of total MGST2 protein.
Protein Families:	Druggable Genome, Transmembrane
Protein Pathways:	Drug metabolism - cytochrome P450, Glutathione metabolism, Metabolism of xenobiotics by cytochrome P450



[View online »](#)

Product images:



Western blot analysis of extracts from COLO205 cells, using MGST2 antibody. The lane on the right is treated with the synthesized peptide.