

Product datasheet for **TA314191**

SCGB2A1 Rabbit Polyclonal Antibody

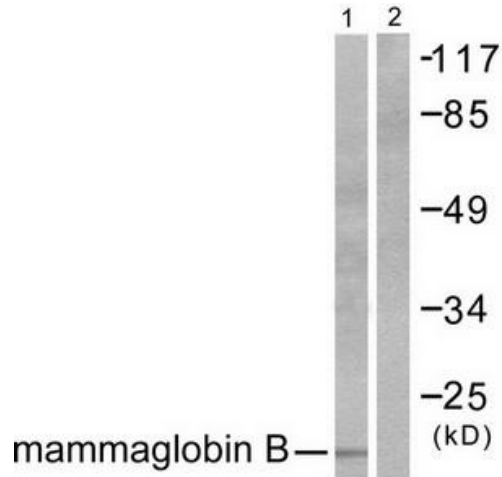
Product data:

Product Type:	Primary Antibodies
Applications:	IHC, WB
Recommended Dilution:	WB: 1:500~1:3000, IHC: 1:50~1:100, ELISA: 1:20000
Reactivity:	Human
Host:	Rabbit
Isotype:	IgG
Clonality:	Polyclonal
Immunogen:	The antiserum was produced against synthesized peptide derived from human Mammaglobin B.
Formulation:	Phosphate buffered saline (without Mg ²⁺ and Ca ²⁺), pH 7.4, 150mM NaCl, 0.02% sodium azide and 50% glycerol.
Concentration:	lot specific
Purification:	The antibody was affinity-purified from rabbit antiserum by affinity-chromatography using epitope-specific immunogen.
Conjugation:	Unconjugated
Storage:	Store at -20°C as received.
Stability:	Stable for 12 months from date of receipt.
Gene Name:	secretoglobin family 2A member 1
Database Link:	NP_002398 Entrez Gene 4246 Human O75556
Synonyms:	LPHC; LPNC; MGB2; UGB3
Note:	Mammaglobin B antibody detects endogenous levels of total Mammaglobin B protein.

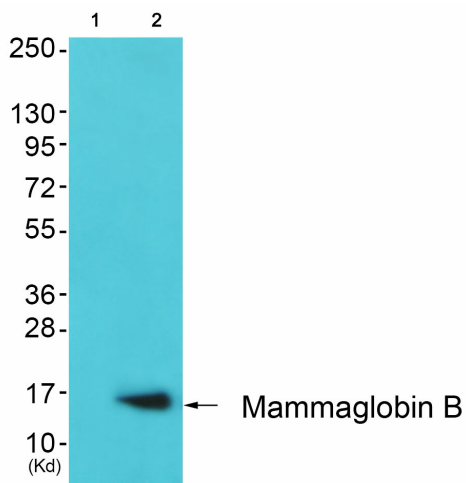


[View online »](#)

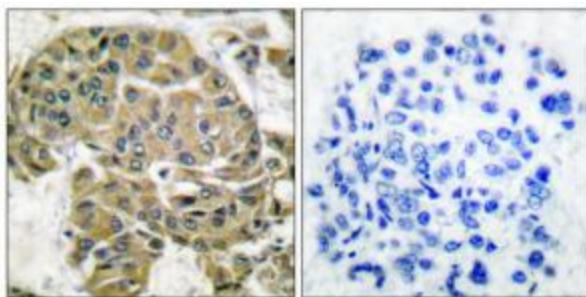
Product images:



Western blot analysis of extracts from HepG2 cells, using Mammaglobin B antibody (#TA314191). The lane on the right is treated with the synthesized peptide.



Western blot analysis of extracts from 293 cells (Lane 2), using Mammaglobin B Antibody. The lane on the left is treated with synthesized peptide.



Immunohistochemical analysis of paraffin-embedded human breast carcinoma tissue using Mammaglobin B antibody (#TA314191). The picture on the right is treated with the synthesized peptide.